

Anti-TUBA1A (phospho-Y272) Antibody

Catalog Number: A03989Y272

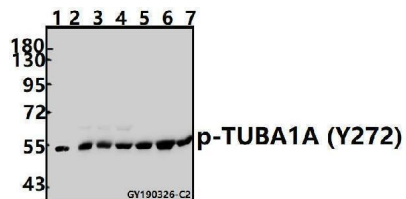
Overview

Product Name	Anti-TUBA1A (phospho-Y272) Antibody
Reactive Species	Human, Mouse, Rat
Description	Boster Bio Anti-TUBA1A (phospho-Y272) Antibody catalog # A03989Y272. Tested in WB applications. This antibody reacts with Human,Rat,Mouse.
Application	WB
Clonality	Polyclonal
Formulation	Rabbit IgG, 1mg/ml in PBS with 0.02% sodium azide, 50% glycerol, pH7.2
Storage Instructions	Store at -20°C for one year. For short term storage and frequent use, store at 4°C for up to one month. Avoid repeated freeze-thaw cycles.
Host	Rabbit
Uniprot ID	Q71U36/P68363/Q9BQE3/Q6PEY2/P68366

Technical Details

Immunogen	Synthetic phosphopeptide derived from human TUBA1A around the phosphorylation site of Tyrosine272.
Isotype	IgG
Form	Liquid
Concentration	1 mg/ml
Purification	The antibody was affinity-purified from rabbit antiserum by affinity-chromatography using epitope-specific immunogen and the purity is > 95% (by SDS-PAGE).
Suggested Dilutions	WB: 1:500-1:1000

Anti-TUBA1A (phospho-Y272) Antibody (A03989Y272) Images



Western blot (WB) analysis of TUBA1A (phospho-Y272) polyclonal antibody at 1:500 dilution Lane1:U-87MG whole cell lysate(40ug) Lane2:A375 whole cell lysate(40ug) Lane3:Hela whole cell lysate(40ug) Lane4:A2780 whole cell lysate(40ug) Lane5:EC9706 whole cell lysate(40ug) Lane6:C6 whole cell lysate(40ug) Lane7:CT26 whole cell lysate(40ug)

Submit a product review to Biocompare.com

Submit a review of this product to Biocompare.com to receive a \$20 Amazon.com giftcard! Your reviews help your fellow scientists make the right decisions. Thank you for your contribution.



Anti-TUBA1A (phospho-Y272) Antibody

For Research Use Only. Not for use in diagnostic procedures.