

Anti-ZIP8 SLC39A8 Antibody

Catalog Number: A04007

About SLC39A8

The zinc transporter ZIP8, also known as SLC39A9, is a member of a family of divalent ion transporters. Zinc is an essential ion for cells and plays significant roles in the growth, development, and differentiation. The zinc transporter family is divided into four subfamilies (I, II, LIV-1 and gufA). ZIP8 is glycosylated and located at the plasma membrane and mitochondria. It has been identified as the transporter responsible for transport of the toxic Cadmium cation. ZIP8 has also been suggested to play a role in the regulation of interferon-gamma expression in activated human T cells.

Overview

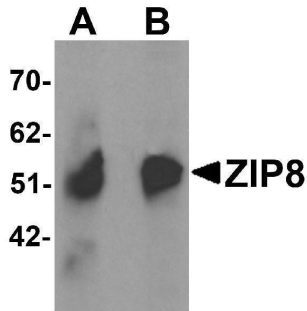
Product Name	Anti-ZIP8 SLC39A8 Antibody
Reactive Species	Human
Description	Boster Bio Anti-ZIP8 SLC39A8 Antibody (Catalog # A04007). Tested in ELISA, WB, IHC-P, IF applications. This antibody reacts with Human.
Application	ELISA, IF, IHC-P, WB
Clonality	Polyclonal
Formulation	ZIP8 Antibody is supplied in PBS containing 0.02% sodium azide.
Storage Instructions	ZIP8 antibody can be stored at 4°C for three months and -20°C, stable for up to one year. Avoid repeated freeze-thaw cycles. Antibodies should not be exposed to prolonged high temperatures.
Host	Rabbit
Uniprot ID	Q9C0K1

Technical Details

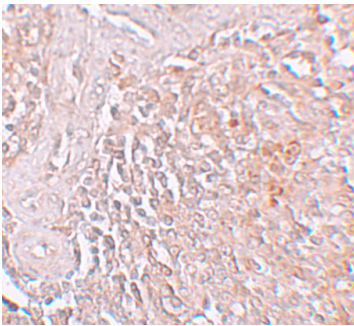
Immunogen	ZIP8 antibody was raised against a 18 amino acid synthetic peptide near the carboxy terminus of human ZIP8. The immunogen is located within the last 50 amino acids of ZIP8.
Predicted Reactive Species	Mouse, Rat
Cross Reactivity	ZIP8 antibody is predicted to not cross-react with other ZIP family members.
Isotype	IgG
Form	Liquid
Concentration	1 mg/mL
Purification	ZIP8 Antibody is affinity chromatography purified via peptide column.
Suggested Dilutions	ZIP8 antibody can be used for detection of ZIP8 by Western blot at 1 - 2 ug/mL. Antibody can also be

used for immunohistochemistry starting at 5 ug/mL. For immunofluorescence start at 20 ug/mL.
Antibody validated: Western Blot in human samples; Immunohistochemistry in human samples and
Immunofluorescence in human samples. All other applications and species not yet tested. Optimal
dilutions for each application should be determined by the researcher.

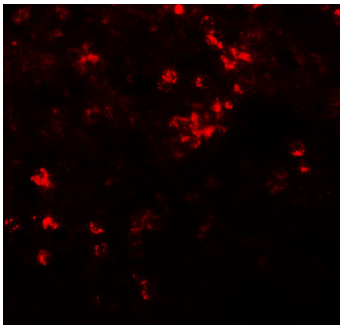
Anti-ZIP8 SLC39A8 Antibody (A04007) Images



Western blot analysis of ZIP8 in human spleen tissue lysate with ZIP8 antibody at (A) 1 and (B) 2 ug/mL.



Immunohistochemistry of ZIP8 in human spleen tissue with ZIP8 antibody at 5 ug/mL.



Immunofluorescence of ZIP8 in human spleen tissue with ZIP8 antibody at 20 ug/mL.

Submit a product review to [Biocompare.com](https://www.biocompare.com)

Submit a review of this product to [Biocompare.com](https://www.biocompare.com) to receive a \$20 Amazon.com giftcard! Your reviews help your fellow scientists make the right decisions. Thank you for your contribution.



Anti-ZIP8 SLC39A8 Antibody

For Research Use Only. Not for use in diagnostic procedures.