

Anti-ADRM1 Antibody

Catalog Number: A04010

About ADRM1

The adhesion-regulating molecule 1 (ADRM1) is thought to be involved in protein recruitment and cell adhesion and functions as a proteasomal ubiquitin receptor (1). ADRM1 promotes the activity of UCH-L5 and plays a role in lymphocyte homing. The carboxy-terminal domain of mammalian ADRM1 serves to bind and enhance the isopeptidase activity of UCHL5/UCH37, perhaps serving as a mechanism to accelerate ubiquitin chain disassembly (2,3). ADRM1 expression is induced by IFN-gamma in some cancer cell lines and its expression is upregulated in other metastatic cells, suggesting a role in carcinogenesis (4,5).

Overview

Product Name	Anti-ADRM1 Antibody
Reactive Species	Human, Mouse, Rat
Description	Boster Bio Anti-ADRM1 Antibody (Catalog # A04010). Tested in ELISA, WB, IHC-P applications. This antibody reacts with Human, Mouse, Rat.
Application	ELISA, IHC-P, WB
Clonality	Polyclonal
Formulation	ADRM1 antibody is supplied in PBS containing 0.02% sodium azide.
Storage Instructions	ADRM1 antibody can be stored at 4°C for three months and -20°C, stable for up to one year.
Host	Rabbit
Uniprot ID	Q16186

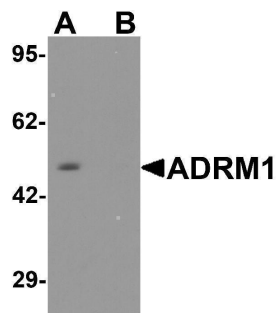
Technical Details

Immunogen	ADRM1 antibody was raised against a 19 amino acid peptide near the center of human ADRM1. The immunogen is located within amino acids 210 - 260 of ADRM1.
Predicted Reactive Species	Bovine
Cross Reactivity	ADRM1 antibody is human, mouse and rat reactive. At least two isoforms of ADRM1 are known to exist; this antibody will detect both isoforms.
Isotype	IgG
Form	Liquid
Concentration	1 mg/mL
Purification	ADRM1 antibody is affinity chromatography purified via peptide column.

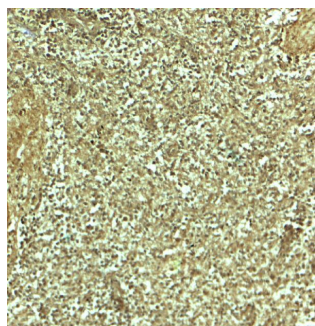
Suggested Dilutions

ADRM1 antibody can be used for detection of ADRM1 by Western blot at 1 - 2 ug/mL. Antibody can also be used for immunohistochemistry starting at 5 ug/mL.
Antibody validated: Western Blot in mouse samples and Immunohistochemistry in human samples.
All other applications and species not yet tested. Optimal dilutions for each application should be determined by the researcher.

Anti-ADRM1 Antibody (A04010) Images



Western blot analysis of ADRM1 in EL cell lysate with ADRM1 antibody at 1 ug/ml in (A) the absence and (B) the presence of blocking peptide.



Immunohistochemistry of ADRM1 in human spleen tissue with ADRM1 antibody at 5 ug/mL.

Submit a product review to [Biocompare.com](https://www.biocompare.com)

Submit a review of this product to [Biocompare.com](https://www.biocompare.com) to receive a \$20 Amazon.com giftcard! Your reviews help your fellow scientists make the right decisions. Thank you for your contribution.



Anti-ADRM1 Antibody

For Research Use Only. Not for use in diagnostic procedures.