

Anti-Cytokeratin 6 KRT6A Antibody

Catalog Number: A04012-1

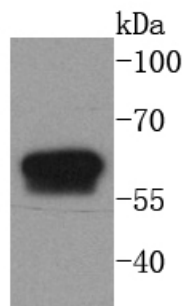
Overview

Product Name	Anti-Cytokeratin 6 KRT6A Antibody
Reactive Species	Human
Description	Boster Bio Anti-Cytokeratin 6 KRT6A Antibody catalog # A04012-1. Tested in WB,ICC/IF,IHC applications. This antibody reacts with Human.
Application	IF, IHC, ICC, WB
Clonality	Polyclonal
Formulation	Rabbit IgG, 1mg/ml in PBS with 0.02% sodium azide, 50% glycerol, pH7.2
Storage Instructions	Store at -20°C for one year. For short term storage and frequent use, store at 4°C for up to one month. Avoid repeated freeze-thaw cycles.
Host	Rabbit
Uniprot ID	P02538

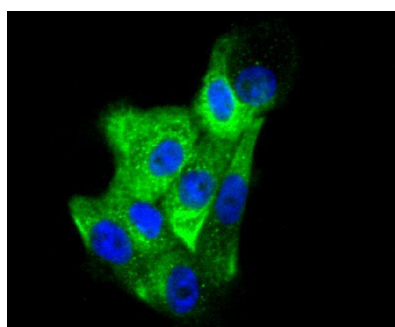
Technical Details

Immunogen	recombinant protein
Isotype	Rabbit IgG
Form	Liquid
Concentration	1mg/ml
Purification	ProA affinity purified
Suggested Dilutions	WB: 1:1,000-1:2,000 ICC: 1:100-1:500 IHC: 1:50-1:200

Anti-Cytokeratin 6 KRT6A Antibody (A04012-1) Images



Western blot analysis of Cytokeratin 6 on human skin lysates using anti-Cytokeratin 6 antibody at 1/1,000 dilution.



ICC staining of Cytokeratin 6 in A431 cells (green). The nuclear counter stain is DAPI (blue). Cells were fixed in paraformaldehyde, permeabilised with 0.25% Triton X100/PBS.

Submit a product review to [Biocompare.com](https://www.biocompare.com)

Submit a review of this product to [Biocompare.com](https://www.biocompare.com) to receive a \$20 Amazon.com giftcard! Your reviews help your fellow scientists make the right decisions. Thank you for your contribution.



Anti-Cytokeratin 6 KRT6A Antibody

For Research Use Only. Not for use in diagnostic procedures.