

## Anti-PP1 beta PPP1CB Monoclonal Antibody

Catalog Number: A04022-1

### About PPP1CB

Transcriptional repressor which binds neuron-restrictive silencer element (NRSE) and represses neuronal gene transcription in non-neuronal cells. Restricts the expression of neuronal genes by associating with two distinct corepressors, mSin3 and CoREST, which in turn recruit histone deacetylase to the promoters of REST-regulated genes. Mediates repression by recruiting the BHC complex at RE1/NRSE sites which acts by deacetylating and demethylating specific sites on histones, thereby acting as a chromatin modifier.

Chong J.A.et.al. (1995)Cell 80:949-957

Schoenherr C.J.et.al.(1995)Science 267:1360-1363

Scholl T.et.al.(1996)J. Immunol. 156:1448-1457

Lunyak V.V.et.al. (2002)Science 298:1747-1752

### Overview

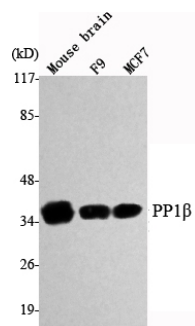
Product Name	Anti-PP1 beta PPP1CB Monoclonal Antibody
Reactive Species	Chicken, Human, Mouse, Pig, Rat
Description	Boster Bio Anti-PP1 beta PPP1CB Monoclonal Antibody catalog # A04022-1. Tested in WB applications. This antibody reacts with Chicken, Human, Mouse, Pig, Rat.
Application	WB
Clonality	Monoclonal 4A1
Formulation	Purified mouse monoclonal in buffer containing 0.1M Tris-Glycine (pH 7.4, 150 mM NaCl) with 0.2% sodium azide, 50% glycerol.
Storage Instructions	Store at -20°C for one year. For short term storage and frequent use, store at 4°C for up to one month. Avoid repeated freeze-thaw cycles.
Host	Mouse
Uniprot ID	P62140

### Technical Details

Immunogen	Synthesized peptide derived from N-terminal of human HXA5.
Predicted Reactive Species	Bovine, Canine, Equine, Guinea Pig, Rabbit, Zebrafish
Isotype	IgG1
Form	Liquid
Concentration	This antibody's concentration is >0.5mg/ml.

Purification	Protein A purified
Suggested Dilutions	<p>Dilute the sample so that the expected range of concentrations fall within the detection range of this kit.</p> <p>If the expected range of concentration is unknown, a pilot test should be conducted to decide the optimal dilution ratio for your samples.</p> <p>Some PubMed article(s) citing the expression level of this target are as follows:</p> <p>Boster Bio's internal QC testing used:</p> <p>WB, 1:1000-1:2000</p>

## Anti-PP1 beta PPP1CB Monoclonal Antibody (A04022-1) Images



Western Blot (WB) analysis using PP1beta Monoclonal antibody against Mouse Brain, F9, MCF7 cell lysate.

### Submit a product review to Biocompare.com

Submit a review of this product to Biocompare.com to receive a \$20 Amazon.com giftcard! Your reviews help your fellow scientists make the right decisions. Thank you for your contribution.



Anti-PP1 beta PPP1CB Monoclonal Antibody