

Anti-Importin subunit alpha-5 KPNA1 Antibody

Catalog Number: A04024

About KPNA1

Karyopherin, a cytosolic and heterodimeric protein complex consisting of alpha and beta subunits, is responsible for targeting proteins with nuclear localization signals to the nuclear pore complex by an energy requiring, Ran-dependent mechanism. The alpha subunit and imported substrate enter the nucleus and accumulate in the nucleoplasm, while the beta subunit accumulates at the NPC. KPNA1, also known as importin alpha 5, is the alpha subunit of karyopherin, which forms a complex with importin subunit beta-1 and functions in nuclear protein import as an adapter protein for nuclear receptor KPNB1. It is ubiquitously expressed and polyubiquitinated in the presence of RAG1. KPNA1 interacts with various virus nucleoproteins, including those of Ebola and influenza.

Overview

Product Name	Anti-Importin subunit alpha-5 KPNA1 Antibody
Reactive Species	Human, Mouse, Rat
Description	Boster Bio Anti-Importin subunit alpha-5 KPNA1 Antibody (Catalog # A04024). Tested in ELISA, WB, ICC, IF applications. This antibody reacts with Human, Mouse, Rat.
Application	ELISA, IF, ICC, WB
Clonality	Polyclonal
Formulation	KPNA1 Antibody is supplied in PBS containing 0.02% sodium azide.
Storage Instructions	KPNA1 antibody can be stored at 4°C for three months and -20°C, stable for up to one year. Avoid repeated freeze-thaw cycles. Antibodies should not be exposed to prolonged high temperatures.
Host	Rabbit
Uniprot ID	P52294

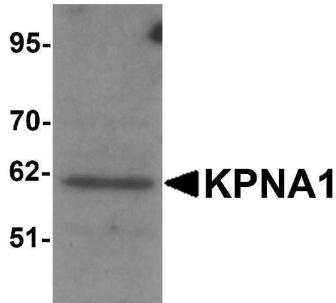
Technical Details

Immunogen	KPNA1 antibody was raised against a 15 amino acid synthetic peptide near the amino terminus of human KPNA1. The immunogen is located within amino acids 30 - 80 of KPNA1.
Predicted Reactive Species	Bovine
Isotype	IgG
Form	Liquid
Concentration	1 mg/mL
Purification	KPNA1 Antibody is affinity chromatography purified via peptide column.

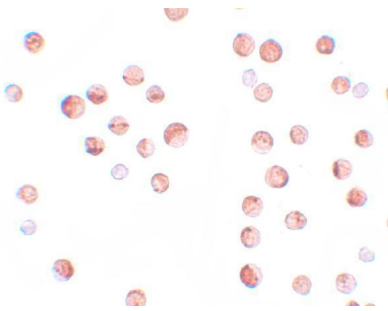
Suggested Dilutions

KPNA1 antibody can be used for detection of KPNA1 by Western blot at 1 ug/mL. Antibody can also be used for immunocytochemistry starting at 2.5 ug/mL. For immunofluorescence start at 20 ug/mL. Antibody validated: Western Blot in human samples; Immunocytochemistry in human samples and Immunofluorescence in human samples. All other applications and species not yet tested. Optimal dilutions for each application should be determined by the researcher.

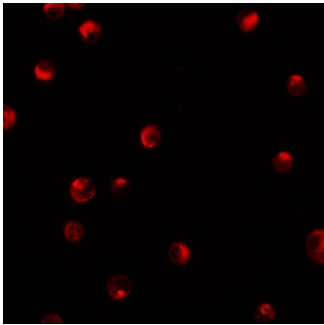
Anti-Importin subunit alpha-5 KPNA1 Antibody (A04024) Images



Western blot analysis of KPNA1 in HeLa cell lysate with KPNA1 antibody at 1ug/mL.



Immunocytochemistry of KPNA1 in HeLa cells with KPNA1 antibody at 2.5 ug/mL.



Immunofluorescence of KPNA1 in K562 cells with KPNA1 antibody at 20 ug/mL.

Submit a product review to [Biocompare.com](https://www.biocompare.com)

Submit a review of this product to [Biocompare.com](https://www.biocompare.com) to receive a \$20 Amazon.com giftcard! Your reviews help your fellow scientists make the right decisions. Thank you for your contribution.



Anti-Importin subunit alpha-5 KPNA1 Antibody

For Research Use Only. Not for use in diagnostic procedures.