

## Anti-LYVE1 Antibody

Catalog Number: A04027

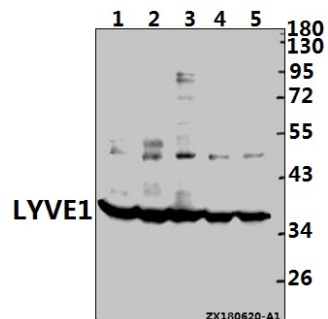
### Overview

Product Name	Anti-LYVE1 Antibody
Reactive Species	Human, Mouse, Rat
Description	Boster Bio Anti-LYVE1 Antibody catalog # A04027. Tested in WB applications. This antibody reacts with Human,Mouse,Rat.
Application	WB
Clonality	Polyclonal
Formulation	Rabbit IgG, 1mg/ml in PBS with 0.02% sodium azide, 50% glycerol, pH7.2
Storage Instructions	Store at -20°C for one year. For short term storage and frequent use, store at 4°C for up to one month. Avoid repeated freeze-thaw cycles.
Host	Rabbit
Uniprot ID	Q9Y5Y7

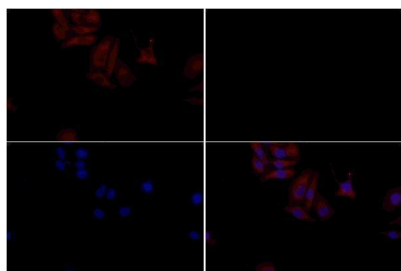
### Technical Details

Immunogen	Synthetic peptide, corresponding to amino acids 60-110 of Human LYVE-1.
Isotype	IgG
Form	Liquid
Concentration	1 mg/ml
Purification	The antibody was affinity-purified from rabbit antiserum by affinity-chromatography using epitope-specific immunogen and the purity is > 95% (by SDS-PAGE).
Suggested Dilutions	WB: 1:500-1:1000

## Anti-LYVE1 Antibody (A04027) Images



Western blot (WB) analysis of LYVE1 pAb at 1:500 dilution  
Lane1:CT26 whole cell lysate(40ug) Lane2:C6 whole cell lysate(40ug) Lane3:HCT116 whole cell lysate(40ug)  
Lane4:MCF-7 whole cell lysate(40ug) Lane5:SGC7901 whole cell lysate(40ug)



Immunofluorescence analysis of HepG2 cells using LYVE1 pAb at dilution of 1:200 (40x lens).

## Submit a product review to Biocompare.com

Submit a review of this product to Biocompare.com to receive a \$20 Amazon.com giftcard! Your reviews help your fellow scientists make the right decisions. Thank you for your contribution.



Anti-LYVE1 Antibody

For Research Use Only. Not for use in diagnostic procedures.