

Anti-LYVE1 Antibody

Catalog Number: A04027-1

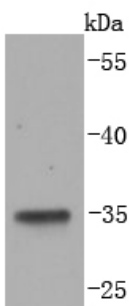
Overview

| | |
|----------------------|--|
| Product Name | Anti-LYVE1 Antibody |
| Reactive Species | Human, Mouse, Rat |
| Description | Boster Bio Anti-LYVE1 Antibody catalog # A04027-1. Tested in WB,ICC/IF,IHC,Flow Cytometry applications. This antibody reacts with Human,Mouse,Rat. |
| Application | Flow Cytometry, IF, IHC, ICC, WB |
| Clonality | Polyclonal |
| Formulation | Rabbit IgG, 1mg/ml in PBS with 0.02% sodium azide, 50% glycerol, pH7.2 |
| Storage Instructions | Store at -20°C for one year. For short term storage and frequent use, store at 4°C for up to one month. Avoid repeated freeze-thaw cycles. |
| Host | Rabbit |
| Uniprot ID | Q9Y5Y7 |

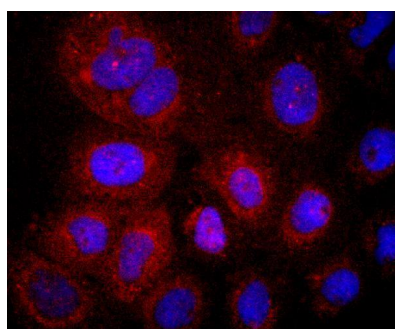
Technical Details

| | |
|---------------------|---|
| Immunogen | recombinant protein |
| Isotype | IgG |
| Form | Liquid |
| Concentration | 1 mg/ml |
| Purification | ProA affinity purified |
| Suggested Dilutions | WB: 1:1,000 ICC: 1:50-1:200 IHC: 1:50-1:200 FC: 1:50-1:100 |

Anti-LYVE1 Antibody (A04027-1) Images



Western blot analysis of LYVE1 on MCF-7 lysates using anti-LYVE1 antibody at 1/1,000 dilution.



ICC staining LYVE1 in A431 cells (red). The nuclear counterstain is DAPI (blue). Cells were fixed in paraformaldehyde, permeabilised with 0.25% Triton X100/PBS.

Submit a product review to [Biocompare.com](https://www.biocompare.com)

Submit a review of this product to [Biocompare.com](https://www.biocompare.com) to receive a \$20 Amazon.com giftcard! Your reviews help your fellow scientists make the right decisions. Thank you for your contribution.



Anti-LYVE1 Antibody

For Research Use Only. Not for use in diagnostic procedures.