

Anti-CYP51A1 Antibody (Center)

Catalog Number: A04032-2

About CYP51A1

CYP51A1 is a member of the cytochrome P450 superfamily of enzymes. The cytochrome P450 proteins are monooxygenases which catalyze many reactions involved in drug metabolism and synthesis of cholesterol, steroids and other lipids. This endoplasmic reticulum protein participates in the synthesis of cholesterol by catalyzing the removal of the 14 α -methyl group from lanosterol.

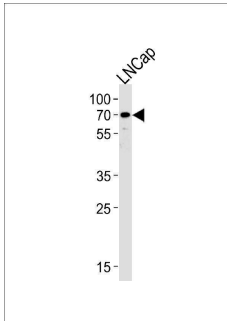
Overview

Product Name	Anti-CYP51A1 Antibody (Center)
Reactive Species	Human
Description	Boster Bio Anti-CYP51A1 Antibody (Center) (Catalog # A04032-2). Tested in WB, Flow Cytometry, IHC-P application(s). This antibody reacts with Human.
Application	Flow Cytometry, IHC-P, WB
Clonality	Polyclonal
Formulation	Purified polyclonal antibody supplied in PBS with 0.09% (W/V) sodium azide.
Storage Instructions	Maintain refrigerated at 2-8°C for up to 2 weeks. For long-term storage, store at -20°C in small aliquots to prevent freeze-thaw cycles.
Host	Rabbit
Uniprot ID	Q16850

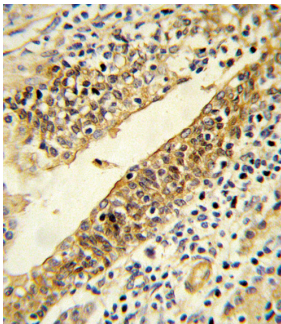
Technical Details

Immunogen	This CYP51A1 antibody is generated from rabbits immunized with a KLH conjugated synthetic peptide between 250-279 amino acids from the Central region of human CYP51A1.
Predicted Reactive Species	Monkey
Isotype	Rabbit IgG
Purification	This antibody is prepared by Saturated Ammonium Sulfate (SAS) precipitation followed by dialysis against PBS.
Suggested Dilutions	WB: 1:1000 IHC-P: 1:10-1:50 FC: 1:10-1:50

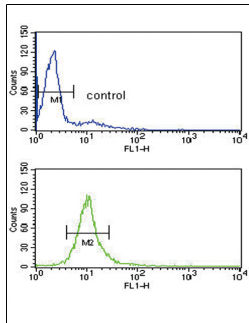
Anti-CYP51A1 Antibody (Center) (A04032-2) Images



Western blot analysis of lysate from LNCap cell line, using CYP51A1 Antibody (Center). A04032-2 was diluted at 1:1000 at each lane. A goat anti-rabbit IgG H&L (HRP) at 1:5000 dilution was used as the secondary antibody. Lysate at 35ug.



Formalin-fixed and paraffin-embedded human prostate carcinoma reacted with CYP51A1 Antibody (Center), which was peroxidase-conjugated to the secondary antibody, followed by DAB staining. This data demonstrates the use of this antibody for immunohistochemistry; clinical relevance has not been evaluated.



CYP51A1 Antibody (Center) flow cytometry analysis of HL-60 cells (bottom histogram) compared to a negative control cell (top histogram). FITC-conjugated goat-anti-rabbit secondary antibodies were used for the analysis.

Submit a product review to [Biocompare.com](https://www.biocompare.com)

Submit a review of this product to [Biocompare.com](https://www.biocompare.com) to receive a \$20 Amazon.com giftcard! Your reviews help your fellow scientists make the right decisions. Thank you for your contribution.



Anti-CYP51A1 Antibody (Center)

For Research Use Only. Not for use in diagnostic procedures.