

Anti-Prorelaxin H2 RLN2 Antibody

Catalog Number: A04045

About RLN2

Central component of the receptor complex responsible for the recognition and translocation of cytosolically synthesized mitochondrial preproteins. Together with TOM22 functions as the transit peptide receptor at the surface of the mitochondrion outer membrane and facilitates the movement of preproteins into the TOM40 translocation pore By similarity.

Goping I.S., FEBS Lett. 373:45-50(1995).

Seki N., FEBS Lett. 375:307-310(1995).

Hernandez J.M., Gene 239:283-291(1999)

Overview

Product Name	Anti-Prorelaxin H2 RLN2 Antibody
Reactive Species	Human, Mouse, Rat
Description	Boster Bio Anti-Prorelaxin H2 RLN2 Antibody catalog # A04045. Tested in WB applications. This antibody reacts with Human,Mouse,Rat.
Application	WB
Clonality	Polyclonal
Formulation	Rabbit IgG, 1mg/ml in PBS with 0.02% sodium azide, 50% glycerol, pH7.2
Storage Instructions	Store at -20°C for one year. For short term storage and frequent use, store at 4°C for up to one month. Avoid repeated freeze-thaw cycles.
Host	Rabbit
Uniprot ID	P04090

Technical Details

Immunogen	Synthesized peptide derived from human GCS-alpha-1.
Predicted Reactive Species	Boar, Bovine, Canine, Golden Hamster
Isotype	IgG
Form	Liquid
Concentration	1 mg/ml
Purification	The antibody was affinity-purified from rabbit antiserum by affinity-chromatography using epitope-specific immunogen and the purity is > 95% (by SDS-PAGE).

Suggested Dilutions

Dilute the sample so that the expected range of concentrations fall within the detection range of this kit.

If the expected range of concentration is unknown, a pilot test should be conducted to decide the optimal dilution ratio for your samples.

Some PubMed article(s) citing the expression level of this target are as follows:

Boster Bio's internal QC testing used:

WB: 1:500-1:1000

Anti-Prorelaxin H2 RLN2 Antibody (A04045) Images

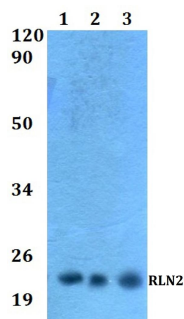


Figure 1. Western blotting validation for Anti-Prorelaxin H2
RLN2 Antibody A04045

Western blot (WB) analysis of RLN2 polyclonal antibody at
1:500 dilution

Lane1:Jurkat whole cell lysate

Lane2:Raw264.7 whole cell lysate

Lane3:PC12 whole cell lysate

Electrophoresis was performed on a SDS-PAGE gel. To
determine SDS-PAGE gel concentration

Submit a product review to Biocompare.com

Submit a review of this product to Biocompare.com to receive a \$20 Amazon.com giftcard! Your reviews help your fellow scientists make the right decisions. Thank you for your contribution.



Anti-Prorelaxin H2 RLN2 Antibody