

## Anti-CaMKII Beta / Gamma / Delta (S280) CAMK2G Antibody

Catalog Number: A04046S280

### Overview

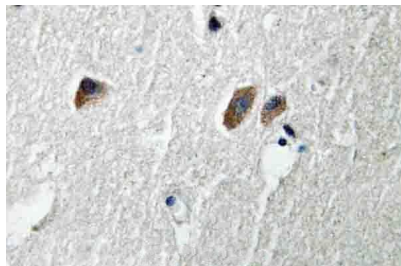
Product Name	Anti-CaMKII Beta / Gamma / Delta (S280) CAMK2G Antibody
Reactive Species	Human, Mouse, Rat
Description	Boster Bio Anti-CaMKII Beta / Gamma / Delta (S280) CAMK2G Antibody catalog # A04046S280. Tested in WB,IHC applications. This antibody reacts with Human,Mouse,Rat.
Application	IHC, WB
Clonality	Polyclonal
Formulation	Rabbit IgG, 1mg/ml in PBS with 0.02% sodium azide, 50% glycerol, pH7.2
Storage Instructions	Store at -20°C for one year. For short term storage and frequent use, store at 4°C for up to one month. Avoid repeated freeze-thaw cycles.
Host	Rabbit
Uniprot ID	Q13555/Q13554/Q13557

### Technical Details

Immunogen	Synthetic peptide, corresponding to amino acids 248-299 of Human CaMKIIbeta.
Isotype	IgG
Form	Liquid
Concentration	1 mg/ml
Purification	The antibody was affinity-purified from rabbit antiserum by affinity-chromatography using epitope-specific immunogen and the purity is > 95% (by SDS-PAGE).
Suggested Dilutions	WB: 1:500-1:1000 IHC: 1:50-1:200

## Anti-CaMKII Beta / Gamma / Delta (S280) CAMK2G Antibody (A04046S280) Images

---



Immunohistochemistry (IHC) analyzes of CaMKIIbeta/gamma/delta (S280) pAb in paraffin-embedded human brain tissue.

### Submit a product review to [Biocompare.com](https://www.biocompare.com)

---

Submit a review of this product to [Biocompare.com](https://www.biocompare.com) to receive a \$20 Amazon.com giftcard! Your reviews help your fellow scientists make the right decisions. Thank you for your contribution.



Anti-CaMKII Beta / Gamma / Delta (S280) CAMK2G Antibody

For Research Use Only. Not for use in diagnostic procedures.