

## Anti-PKD2 (phospho-S876) PRKD2 Antibody

Catalog Number: A04056S876

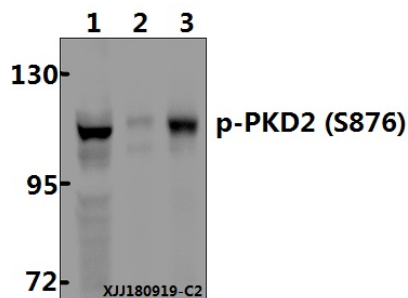
### Overview

Product Name	Anti-PKD2 (phospho-S876) PRKD2 Antibody
Reactive Species	Human
Description	Boster Bio Anti-PKD2 (phospho-S876) PRKD2 Antibody catalog # A04056S876. Tested in WB applications. This antibody reacts with Human.
Application	WB
Clonality	Polyclonal
Formulation	Rabbit IgG, 1mg/ml in PBS with 0.02% sodium azide, 50% glycerol, pH7.2
Storage Instructions	Store at -20°C for one year. For short term storage and frequent use, store at 4°C for up to one month. Avoid repeated freeze-thaw cycles.
Host	Rabbit
Uniprot ID	Q9BZL6

### Technical Details

Immunogen	Synthetic phosphopeptide derived from human PKD2 around the phosphorylation site of Serine 876
Isotype	IgG
Form	Liquid
Concentration	1 mg/ml
Purification	The antibody was affinity-purified from rabbit antiserum by affinity-chromatography using epitope-specific immunogen and the purity is > 95% (by SDS-PAGE).
Suggested Dilutions	WB: 1:500-1:1000

## Anti-PKD2 (phospho-S876) PRKD2 Antibody (A04056S876) Images



Western blot (WB) analysis of PKD2 (phospho-S876) polyclonal antibody at 1:500 dilution Lane1:DLD whole cell lysate(40µg) Lane2:MG63 whole cell lysate(40µg) Lane3:COS-7 whole cell lysate(40µg)

### Submit a product review to Biocompare.com

Submit a review of this product to Biocompare.com to receive a \$20 Amazon.com giftcard! Your reviews help your fellow scientists make the right decisions. Thank you for your contribution.



Anti-PKD2 (phospho-S876) PRKD2 Antibody

For Research Use Only. Not for use in diagnostic procedures.