

## Anti-Phospho-PKD2 (S876) PRKD2 Antibody

Catalog Number: A04056S876-1

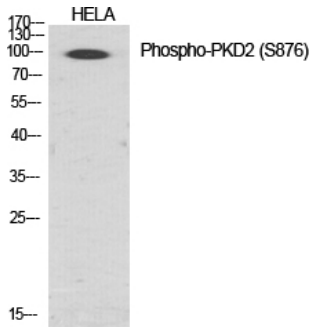
### Overview

Product Name	Anti-Phospho-PKD2 (S876) PRKD2 Antibody
Reactive Species	Human, Mouse, Rat
Description	Boster Bio Anti-Phospho-PKD2 (S876) PRKD2 Antibody catalog # A04056S876-1. Tested in WB, IHC, IF, ELISA applications. This antibody reacts with Human, Mouse, Rat.
Application	ELISA, IF, IHC, WB
Clonality	Polyclonal
Formulation	Liquid in PBS containing 50% glycerol, 0.5% stabilizing protein and 0.02% sodium azide. *This antibody is supplied in a stabilized formulation. Compatibility with conjugation reactions depends on the chemistry of the conjugation method used. For conjugation methods that are not compatible with the stabilizing components present in this formulation, a carrier-free antibody format is required.
Storage Instructions	Store at -20°C for one year. For short term storage and frequent use, store at 4°C for up to one month. Avoid repeated freeze-thaw cycles.
Host	Rabbit
Uniprot ID	Q9BZL6

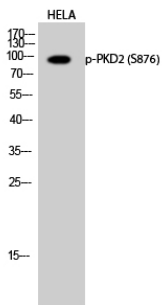
### Technical Details

Immunogen	The antiserum was produced against synthesized peptide derived from human PKD2 around the phosphorylation site of Ser876. AA range:829-878
Isotype	IgG
Form	Liquid
Concentration	1 mg/ml
Purification	The antibody was affinity-purified from rabbit antiserum by affinity-chromatography using epitope-specific immunogen.
Suggested Dilutions	WB 1:500-1:2000 IHC 1:100-1:300 ELISA 1:40000 IF 1:50-200

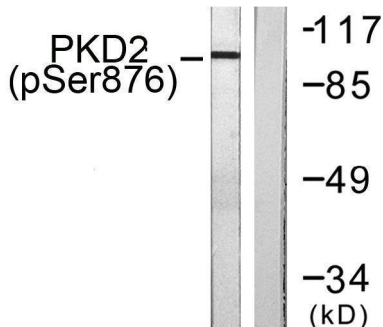
## Anti-Phospho-PKD2 (S876) PRKD2 Antibody (A04056S876-1) Images



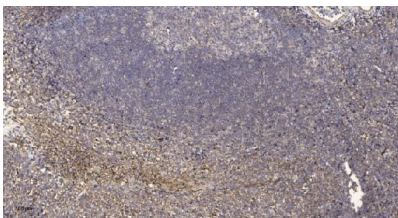
Western Blot analysis of various cells using Phospho-PKD2 (S876) Polyclonal Antibody diluted at 1:1000



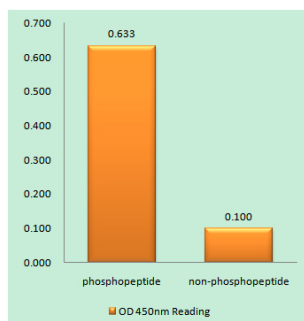
Western Blot analysis of HELA cells using Phospho-PKD2 (S876) Polyclonal Antibody diluted at 1:1000



Western blot analysis of lysates from NIH/3T3 cells treated with PMA 250ng/ml 15', using PKD2 (Phospho-Ser876) Antibody. The lane on the right is blocked with the phospho peptide.



Immunohistochemical analysis of paraffin-embedded human tonsil. 1, Antibody was diluted at 1:200 (4° overnight). 2, Tris-EDTA, pH9.0 was used for antigen retrieval. 3, Secondary antibody was diluted at 1:200 (room temperature, 30min).



Enzyme-Linked Immunosorbent Assay (Phospho-ELISA) for Immunogen Phosphopeptide (Phospho-left) and Non-Phosphopeptide (Phospho-right), using PKD2 (Phospho-Ser876) Antibody

## Submit a product review to Biocompare.com

Submit a review of this product to Biocompare.com to receive a \$20 Amazon.com giftcard! Your reviews help your fellow scientists make the right decisions. Thank you for your contribution.



Anti-Phospho-PKD2 (S876) PRKD2 Antibody

For Research Use Only. Not for use in diagnostic procedures.