

Anti-MME Antibody (Center)

Catalog Number: A04065

About MME

MME is a common acute lymphocytic leukemia antigen that is an important cell surface marker in the diagnosis of human acute lymphocytic leukemia (ALL). This protein is present on leukemic cells of pre-B phenotype, which represent 85% of cases of ALL. This protein is not restricted to leukemic cells, however, and is found on a variety of normal tissues. It is a protein that is particularly abundant in kidney, where it is present on the brush border of proximal tubules and on glomerular epithelium. The protein is a neutral endopeptidase that cleaves peptides at the amino side of hydrophobic residues and inactivates several peptide hormones including glucagon, enkephalins, substance P, neurotensin, oxytocin, and bradykinin.

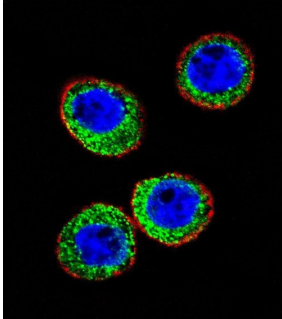
Overview

Product Name	Anti-MME Antibody (Center)
Reactive Species	Human, Mouse
Description	Boster Bio Anti-MME Antibody (Center) (Catalog # A04065). Tested in WB, IF application(s). This antibody reacts with Human, Mouse.
Application	IF, WB
Clonality	Polyclonal
Formulation	Purified polyclonal antibody supplied in PBS with 0.09% (W/V) sodium azide.
Storage Instructions	Maintain refrigerated at 2-8°C for up to 2 weeks. For long-term storage, store at -20°C in small aliquots to prevent freeze-thaw cycles.
Host	Rabbit
Uniprot ID	P08473

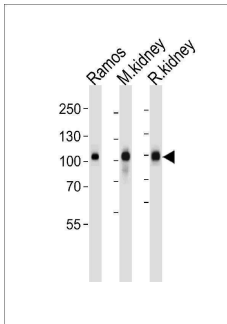
Technical Details

Immunogen	This MME antibody is generated from rabbits immunized with a KLH conjugated synthetic peptide between 274-302 amino acids from the Central region of human MME.
Predicted Reactive Species	Rat
Isotype	Rabbit IgG
Purification	This antibody is prepared by Saturated Ammonium Sulfate (SAS) precipitation followed by dialysis against PBS.
Suggested Dilutions	IF: 1:10-1:50 WB: 1:1000

Anti-MME Antibody (Center) (A04065) Images



Confocal immunofluorescent analysis of MME Antibody (Center) with WiDr cell followed by Alexa Fluor 488-conjugated goat anti-rabbit IgG (green). Actin filaments have been labeled with Alexa Fluor 555 phalloidin (red). DAPI was used to stain the cell nuclear (blue).



Western blot analysis of lysates from Ramos cell line, mouse kidney and rat kidney tissue (from left to right), using Nepriylsin Antibody (Center) (Cat. #A04065). A04065 was diluted at 1:1000 at each lane. A goat anti-rabbit IgG H&L (HRP) at 1:5000 dilution was used as the secondary antibody. Lysates at 35ug per lane.

Submit a product review to Biocompare.com

Submit a review of this product to Biocompare.com to receive a \$20 Amazon.com giftcard! Your reviews help your fellow scientists make the right decisions. Thank you for your contribution.



Anti-MME Antibody (Center)

For Research Use Only. Not for use in diagnostic procedures.