

Anti-MAPKAP1 Antibody

Catalog Number: A04068-1

About MAPKAP1

MAPKAP1 was initially identified as the human homolog of *S. pombe* SIN1. Recent evidence has shown that it identical to Mip1, a protein that interacts with MEKK2, a member of the mitogen-activated protein kinase (MAPK) intracellular signaling network. MAPKAP1 is thought to prevent MEKK2 activation and dimerization by forming a complex with the inactive and non-phosphorylated MEKK2, thereby blocking the JNK1/2, ERK1/2, p38 and ERK5 MAPKs. MAPKAP1 has also been shown to play a role in the TOR signaling process, a pathway that is involved in controlling cell growth and proliferation in response to environmental cues such as nutrients, growth factors and hormones. Experiments showed that MAPKAP1 helped to maintain the TOR/ric1/2 assembly but not the TOR/RAPTOR complex, which allowed specific phosphorylation of Akt, a kinase that is believed to couple the growth factor-PI3K signaling pathway to the nutrient-regulated TOR signaling pathway. Multiple alternatively spliced isoforms of MAPKAP1 have been identified.

Overview

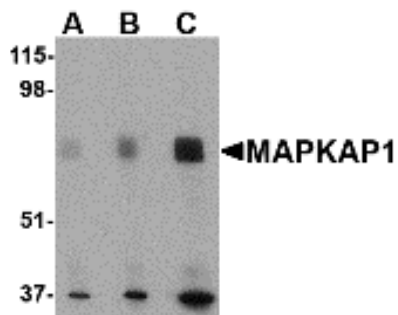
Product Name	Anti-MAPKAP1 Antibody
Reactive Species	Human, Mouse, Rat
Description	Boster Bio Anti-MAPKAP1 Antibody (Catalog # A04068-1). Tested in ELISA, WB, IHC-P, IF applications. This antibody reacts with Human, Mouse, Rat.
Application	ELISA, IF, IHC-P, WB
Clonality	Polyclonal
Formulation	MAPKAP1 Antibody is supplied in PBS containing 0.02% sodium azide.
Storage Instructions	MAPKAP1 antibody can be stored at 4°C for three months and -20°C, stable for up to one year. Avoid repeated freeze-thaw cycles. Antibodies should not be exposed to prolonged high temperatures.
Host	Rabbit
Uniprot ID	Q9BPZ7

Technical Details

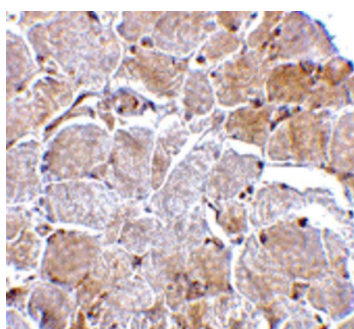
Immunogen	MAPKAP1 antibody was raised against a 19 amino acid synthetic peptide from near the amino terminus of human MAPKAP1. The immunogen is located within amino acids 90 - 140 of MAPKAP1.
Predicted Reactive Species	Bovine, Sheep
Isotype	IgG
Form	Liquid
Concentration	1 mg/mL

Purification	MAPKAP1 Antibody is affinity chromatography purified via peptide column.
Suggested Dilutions	MAPKAP1 antibody can be used for detection of MAPKAP1 by Western blot at 0.5 - 1 ug/mL. Antibody can also be used for immunohistochemistry starting at 2.5 ug/mL. For immunofluorescence start at 20 ug/mL. Antibody validated: Western Blot in human samples; Immunohistochemistry in human samples and Immunofluorescence in human samples. All other applications and species not yet tested. Optimal dilutions for each application should be determined by the researcher.

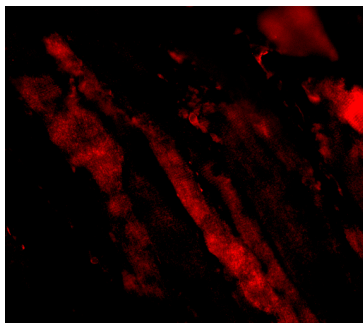
Anti-MAPKAP1 Antibody (A04068-1) Images



Western blot analysis of MAPKAP1 in human skeletal muscle tissue lysate with MAPKAP1 antibody at (A) 0.5, (B) 1 and (C) 2 ug/mL.



Immunohistochemistry of MAPKAP1 in human skeletal muscle tissue with MAPKAP1 antibody at 2.5 ug/mL.



Immunofluorescence of MAPKAP1 in Human Skeletal Muscle cells with MAPKAP1 antibody at 20 ug/mL.

Submit a product review to [Biocompare.com](https://www.biocompare.com)

Submit a review of this product to [Biocompare.com](https://www.biocompare.com) to receive a \$20 Amazon.com giftcard! Your reviews help your fellow scientists make the right decisions. Thank you for your contribution.



Anti-MAPKAP1 Antibody

For Research Use Only. Not for use in diagnostic procedures.