

Anti-MRC2/Endo180 Antibody

Catalog Number: A04070

About MRC2

May play a role as endocytotic lectin receptor displaying calcium-dependent lectin activity. Internalizes glycosylated ligands from the extracellular space for release in an endosomal compartment via clathrin-mediated endocytosis. May be involved in plasminogen activation system controlling the extracellular level of PLAUR/PLAU, and thus may regulate protease activity at the cell surface. May contribute to cellular uptake, remodeling and degradation of extracellular collagen matrices. May play a role during cancer progression as well as in other chronic tissue destructive diseases acting on collagen turnover. May participate in remodeling of extracellular matrix cooperating with the matrix metalloproteinases (MMPs).

Behrendt N., J. Biol. Chem. 275:1993-2002(2000).

Sheikh H., J. Cell Sci. 113:1021-1032(2000).

Howard M.J., J. Biol. Chem. 277:32320-32331(2002).<

Overview

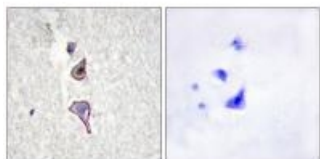
Product Name	Anti-MRC2/Endo180 Antibody
Reactive Species	Human, Mouse, Rat
Description	Boster Bio Anti-MRC2/Endo180 Antibody (Catalog # A04070). Tested in WB, IHC, IF applications. This antibody reacts with Human, Mouse, Rat.
Application	IF, IHC, WB
Clonality	Polyclonal
Formulation	Rabbit IgG in phosphate buffered saline (without Mg ²⁺ and Ca ²⁺), pH 7.4, 150mM NaCl, 0.02% sodium azide and 50% glycerol.
Storage Instructions	Store at -20°C for one year. For short term storage and frequent use, store at 4°C for up to one month. Avoid repeated freeze-thaw cycles.
Host	Rabbit
Uniprot ID	Q9UBG0

Technical Details

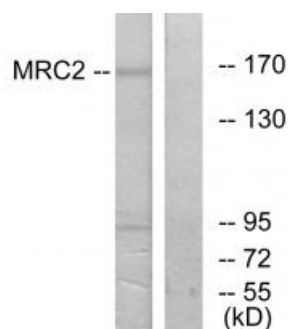
Immunogen	Synthesized peptide derived from internal of human MRC2.
Predicted Reactive Species	Boar, Bovine, Canine, Golden Hamster
Isotype	IgG
Form	Liquid
Concentration	1 mg/ml

Purification	The antibody was affinity-purified from rabbit antiserum by affinity-chromatography using epitope-specific immunogen.
Suggested Dilutions	<p>Dilute the sample so that the expected range of concentrations fall within the detection range of this kit.</p> <p>If the expected range of concentration is unknown, a pilot test should be conducted to decide the optimal dilution ratio for your samples.</p> <p>Some PubMed article(s) citing the expression level of this target are as follows:</p> <p>Boster Bio's internal QC testing used:</p> <p>Western blotting: 1:500~1:3000</p> <p>Immunohistochemistry: 1:50~1:100</p> <p>Immunofluorescence: 1:100~1:500</p>

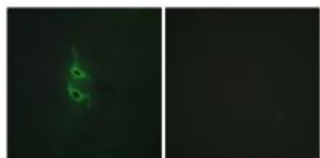
Anti-MRC2/Endo180 Antibody (A04070) Images



Immunohistochemistry analysis of paraffin-embedded human brain tissue using MRC2 antibody A04070.



Western blot analysis of extracts from 293 cells, using MRC2 antibody A04070.



Immunofluorescence analysis of HepG2 cells, using MRC2 antibody A04070.

Submit a product review to Biocompare.com

Submit a review of this product to Biocompare.com to receive a \$20 Amazon.com giftcard! Your reviews help your fellow scientists make the right decisions. Thank you for your contribution.



Anti-MRC2/Endo180 Antibody