

Anti-Pinch-1 LIMS1 Monoclonal Antibody

Catalog Number: A04072

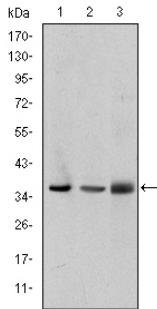
Overview

Product Name	Anti-Pinch-1 LIMS1 Monoclonal Antibody
Reactive Species	Human
Description	Boster Bio Anti-Pinch-1 LIMS1 Monoclonal Antibody catalog # A04072. Tested in WB, IF, Flow Cytometry, ELISA applications. This antibody reacts with Human.
Application	ELISA, Flow Cytometry, IF, WB
Clonality	Monoclonal 5G7
Formulation	Ascitic fluid containing 0.03% sodium azide.
Storage Instructions	Store at -20°C for one year. For short term storage and frequent use, store at 4°C for up to one month. Avoid repeated freeze-thaw cycles.
Host	Mouse
Uniprot ID	P48059

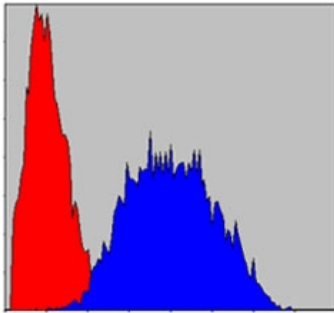
Technical Details

Immunogen	Purified recombinant fragment of human Pinch-1 expressed in E. Coli.
Isotype	IgG
Form	Liquid
Concentration	1 mg/ml
Purification	Ascitic fluid
Suggested Dilutions	WB 1:500-1:2000 IF 1:200-1:1000 FC 1:200-1:400 ELISA 1:10000

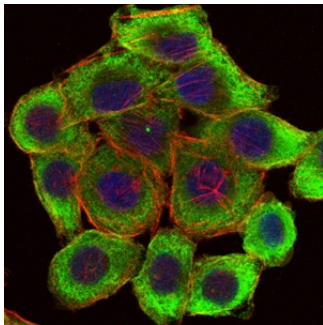
Anti-Pinch-1 LIMS1 Monoclonal Antibody (A04072) Images



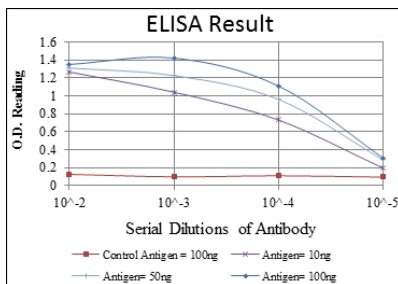
Western Blot (WB) analysis using Pinch-1 Monoclonal antibody against A549 (1), Jurkat (2), and HeLa (3) cell lysate.



Flow cytometric (FCM) analysis of HeLa cells using Pinch-1 Monoclonal antibody (blue) and negative control (red).



Immunofluorescence (IF) analysis of HepG2 cells using Pinch-1 Monoclonal antibody (green). Blue: DRAQ5 fluorescent DNA dye. Red: Actin filaments have been labeled with Alexa Fluor-555 phalloidin.



ELISA analysis of Pinch-1 antibody.

Submit a product review to [Biocompare.com](https://www.biocompare.com)

Submit a review of this product to [Biocompare.com](https://www.biocompare.com) to receive a \$20 Amazon.com giftcard! Your reviews help your fellow scientists make the right decisions. Thank you for your contribution.



Anti-Pinch-1 LIMS1 Monoclonal Antibody

For Research Use Only. Not for use in diagnostic procedures.