

## Anti-GOT1 Antibody

Catalog Number: A04085-2

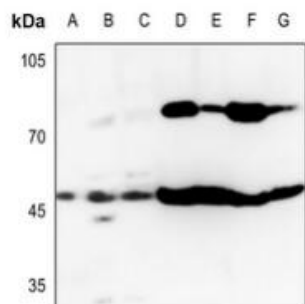
### Overview

Product Name	Anti-GOT1 Antibody
Reactive Species	Human, Mouse, Rat
Description	Boster Bio Anti-GOT1 Antibody catalog # A04085-2. Tested in WB,IHC,ICC/IF applications. This antibody reacts with Human,Mouse,Rat.
Application	IF, IHC, ICC, WB
Clonality	Polyclonal
Formulation	Rabbit IgG, 1mg/ml in PBS with 0.02% sodium azide, 50% glycerol, pH7.2
Storage Instructions	Store at -20°C for one year. For short term storage and frequent use, store at 4°C for up to one month. Avoid repeated freeze-thaw cycles.
Host	Rabbit
Uniprot ID	P17174

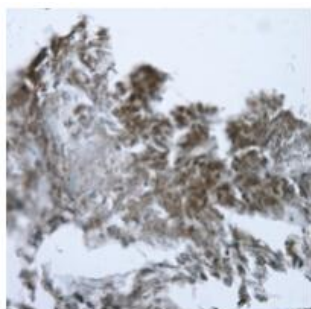
### Technical Details

Immunogen	KLH-conjugated synthetic peptide encompassing a sequence within the N-term region of human GOT1.
Isotype	IgG
Form	Liquid
Concentration	1 mg/ml
Purification	The antibody was affinity-purified from rabbit antiserum by affinity-chromatography using epitope-specific immunogen and the purity is > 95% (by SDS-PAGE).
Suggested Dilutions	WB: 1:500-1:2000 IHC: 1:50-1:200 ICC/IF: 1:10-1:100

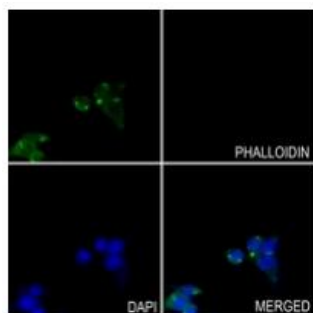
## Anti-GOT1 Antibody (A04085-2) Images



Western blot analysis of GOT1 expression in HEK293T (A), HeLa (B), DLD (C), mouse heart (D), mouse brain (E), rat heart (F), rat brain (G) whole cell lysates.



Immunohistochemical analysis of GOT1 staining in human colorectal cancer formalin fixed paraffin embedded tissue section.



Immunofluorescent analysis of GOT1 staining in MCF7 cells.

## Submit a product review to Biocompare.com

Submit a review of this product to Biocompare.com to receive a \$20 Amazon.com giftcard! Your reviews help your fellow scientists make the right decisions. Thank you for your contribution.



Anti-GOT1 Antibody

For Research Use Only. Not for use in diagnostic procedures.