

## Anti-BATF Antibody

Catalog Number: A04089

### About BATF

BATF is a nuclear basic leucine zipper protein that belongs to the AP-1/ATF superfamily of transcription factors. The leucine zipper of this protein mediates dimerization with members of the Jun family of proteins. This protein is thought to be a negative regulator of AP-1/ATF transcriptional events and blocks cellular transformation by Ras and Fos. BATF also is required for the differentiation of IL-17-producing T helper (TH17) cells, a CD4+ subset of T cells that coordinates the inflammatory response in host defense. In both T cells and B cells, BATF is required for the appropriate regulation of the class-switch recombination.

### Overview

Product Name	Anti-BATF Antibody
Reactive Species	Human, Mouse, Rat
Description	Boster Bio Anti-BATF Antibody (Catalog # A04089). Tested in ELISA, WB, IF applications. This antibody reacts with Human, Mouse, Rat.
Application	ELISA, IF, WB
Clonality	Polyclonal
Formulation	BATF Antibody is supplied in PBS containing 0.02% sodium azide.
Storage Instructions	BATF antibody can be stored at 4°C for three months and -20°C, stable for up to one year. Avoid repeated freeze-thaw cycles. Antibodies should not be exposed to prolonged high temperatures.
Host	Rabbit
Uniprot ID	Q16520

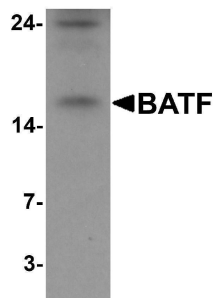
### Technical Details

Immunogen	BATF antibody was raised against a 16 amino acid synthetic peptide near the amino terminus of human BATF. The immunogen is located within the first 50 amino acids of BATF.
Predicted Reactive Species	Bovine
Cross Reactivity	Multiple isoforms of BATF are known to exist. Despite its predicted molecular weight, BATF often migrates at a higher than expected molecular weight.
Isotype	IgG
Form	Liquid
Concentration	1 mg/mL
Purification	BATF Antibody is affinity chromatography purified via peptide column.

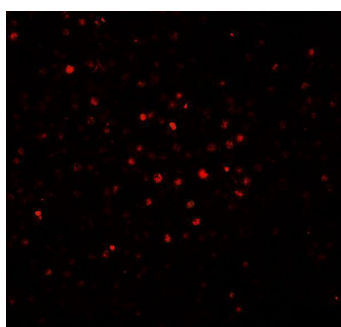
Suggested Dilutions

BATF antibody can be used for detection of BATF by Western blot at 0.5 ug/mL. For immunofluorescence start at 20 ug/mL.  
Antibody validated: Western Blot in rat samples and Immunofluorescence in human samples. All other applications and species not yet tested. Optimal dilutions for each application should be determined by the researcher.

## Anti-BATF Antibody (A04089) Images



Western blot analysis of BATF in rat spleen tissue lysate with BATF antibody at 1 ug/mL.



Immunofluorescence of BATF in human spleen tissue with BATF antibody at 20 ug/mL.

### Submit a product review to [Biocompare.com](https://www.biocompare.com)

Submit a review of this product to [Biocompare.com](https://www.biocompare.com) to receive a \$20 Amazon.com giftcard! Your reviews help your fellow scientists make the right decisions. Thank you for your contribution.



### Anti-BATF Antibody

For Research Use Only. Not for use in diagnostic procedures.