

Anti-Ephrin-B3 Antibody

Catalog Number: A04098

About EFNB3

Cell surface transmembrane ligand for Eph receptors, a family of receptor tyrosine kinases which are crucial for migration, repulsion and adhesion during neuronal, vascular and epithelial development. Binds promiscuously Eph receptors residing on adjacent cells, leading to contact-dependent bidirectional signaling into neighboring cells. The signaling pathway downstream of the receptor is referred to as forward signaling while the signaling pathway downstream of the ephrin ligand is referred to as reverse signaling. May play a pivotal role in forebrain function. Binds to, and induce the collapse of, commissural axons/growth cones in vitro. May play a role in constraining the orientation of longitudinally projecting axons by similarity.

Mitsutoshi Nakada, Cancer Res., Sep 2006; 66: 8492 - 8500.

Klas Kullander, Genes & Dev., Apr 2001; 15: 877.

M. Douglas Benson, PNAS, Jul 2005; 102: 10694 - 10699.

Stephanie R. Kadison, J. Neurosci., Aug 2006; 26: 8909 - 8914.

Overview

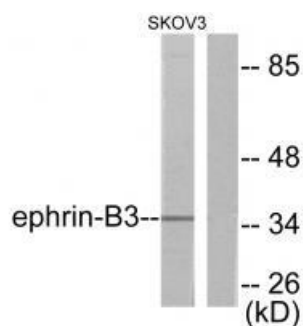
Product Name	Anti-Ephrin-B3 Antibody
Reactive Species	Human, Mouse, Rat
Description	Boster Bio Anti-Ephrin-B3 Antibody (Catalog # A04098). Tested in WB, IHC applications. This antibody reacts with Human, Mouse, Rat.
Application	IHC, WB
Clonality	Polyclonal
Formulation	Rabbit IgG in phosphate buffered saline (without Mg ²⁺ and Ca ²⁺), pH 7.4, 150mM NaCl, 0.02% sodium azide and 50% glycerol.
Storage Instructions	Store at -20°C for one year. For short term storage and frequent use, store at 4°C for up to one month. Avoid repeated freeze-thaw cycles.
Host	Rabbit
Uniprot ID	Q15768

Technical Details

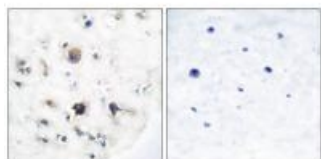
Immunogen	Synthesized peptide derived from human Ephrin-B3.
Predicted Reactive Species	Boar, Bovine, Canine, Golden Hamster
Isotype	IgG

Form	Liquid
Concentration	1 mg/ml
Purification	The antibody was affinity-purified from rabbit antiserum by affinity-chromatography using epitope-specific immunogen.
Suggested Dilutions	<p>Dilute the sample so that the expected range of concentrations fall within the detection range of this kit.</p> <p>If the expected range of concentration is unknown, a pilot test should be conducted to decide the optimal dilution ratio for your samples.</p> <p>Some PubMed article(s) citing the expression level of this target are as follows:</p> <p>Boster Bio's internal QC testing used:</p> <p>Western blotting: 1:500~1:3000</p> <p>Immunohistochemistry: 1:50~1:100</p>

Anti-Ephrin-B3 Antibody (A04098) Images



Western blot analysis of extracts from SKOV3 cells, using Ephrin-B3 antibody A04098.



Immunohistochemical analysis of paraffin-embedded human brain tissue using Ephrin-B3 antibody A04098.

Submit a product review to Biocompare.com

Submit a review of this product to Biocompare.com to receive a \$20 Amazon.com giftcard! Your reviews help your fellow scientists make the right decisions. Thank you for your contribution.



Anti-Ephrin-B3 Antibody