

Anti-PHLPP2 Antibody

Catalog Number: A04110

About PHLPP2

PHLPP2 is a member of the serine/threonine phosphatase family, which are important regulators of Akt serine-threonine kinases (AKT1, AKT2, AKT3) and conventional/novel protein kinase C (PKC) isoforms. PHLPP1 and PHLPP2 have a similar domain structure and have been shown to dephosphorylate and inactivate, distinct Akt isoforms, at one of the two critical phosphorylation sites required for activation: Serine473. PHLPP2 dephosphorylates AKT1 and AKT3, whereas PHLPP1 is specific for AKT2 and AKT3. PHLPP1 promotes apoptosis and may act as a tumor suppressor. PHLPP2 associates with and is inhibited by adenylyl cyclase type 6 (AC6), thereby allowing Akt activation.

Overview

| | |
|----------------------|---|
| Product Name | Anti-PHLPP2 Antibody |
| Reactive Species | Human |
| Description | Boster Bio Anti-PHLPP2 Antibody (Catalog # A04110). Tested in ELISA, WB, ICC, IF applications. This antibody reacts with Human. |
| Application | ELISA, IF, ICC, WB |
| Clonality | Polyclonal |
| Formulation | PHLPP2 Antibody is supplied in PBS containing 0.02% sodium azide. |
| Storage Instructions | PHLPP2 antibody can be stored at 4°C for three months and -20°C, stable for up to one year. Avoid repeated freeze-thaw cycles. Antibodies should not be exposed to prolonged high temperatures. |
| Host | Rabbit |
| Uniprot ID | Q6ZVD8 |

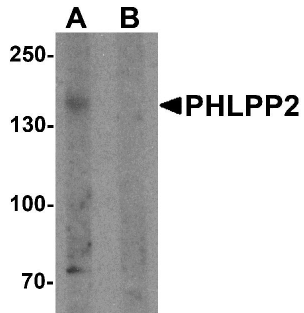
Technical Details

| | |
|----------------------------|--|
| Immunogen | PHLPP2 antibody was raised against a 20 amino acid synthetic peptide near the carboxy terminus of human PHLPP2. The immunogen is located within the last 50 amino acids of PHLPP2. |
| Predicted Reactive Species | Bovine |
| Cross Reactivity | At least three isoforms are known to exist; this antibody will detect the two largest isoforms. PHLPP2 antibody is predicted to not cross react with PHLPP1. |
| Isotype | IgG |
| Form | Liquid |
| Concentration | 1 mg/mL |
| Purification | PHLPP2 Antibody is affinity chromatography purified via peptide column. |

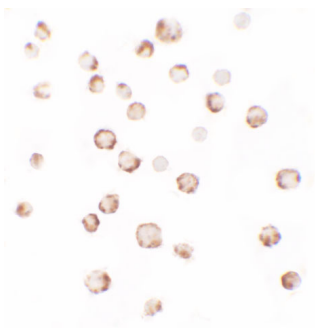
Suggested Dilutions

PHLPP2 antibody can be used for detection of PHLPP2 by Western blot at 1 ug/mL.
Antibody validated: Western Blot in human samples; Immunocytochemistry in human samples and Immunofluorescence in human samples. All other applications and species not yet tested. Optimal dilutions for each application should be determined by the researcher.

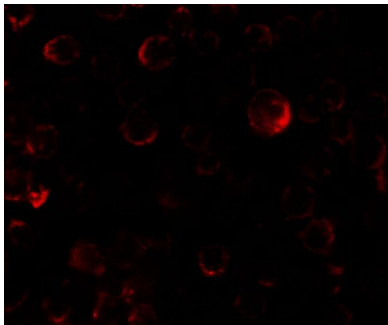
Anti-PHLPP2 Antibody (A04110) Images



Western blot analysis of PHLPP2 in SW480 cell lysate with PHLPP2 antibody at 1 ug/ml in (A) the presence and (B) the absence of blocking peptide.



Immunocytochemistry of PHLPP2 in SW480 cells with PHLPP2 antibody at 2.5 ug/ml.



Immunofluorescence of PHLPP2 in SW480 cells with PHLPP2 antibody at 5 ug/ml.

Submit a product review to [Biocompare.com](https://www.biocompare.com)

Submit a review of this product to [Biocompare.com](https://www.biocompare.com) to receive a \$20 Amazon.com giftcard! Your reviews help your fellow scientists make the right decisions. Thank you for your contribution.



Anti-PHLPP2 Antibody