

Anti-KLC1 Antibody (Center)

Catalog Number: A04116-1

About KLC1

Kinesin is a microtubule-associated force-producing protein that may play a role in organelle transport. The light chain may function in coupling of cargo to the heavy chain or in the modulation of its ATPase activity.

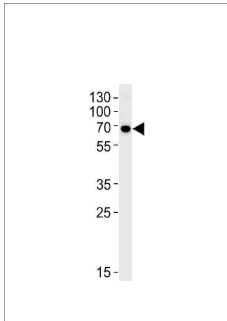
Overview

Product Name	Anti-KLC1 Antibody (Center)
Reactive Species	Human
Description	Boster Bio Anti-KLC1 Antibody (Center) (Catalog # A04116-1). Tested in WB, Flow Cytometry, IHC-P application(s). This antibody reacts with Human.
Application	Flow Cytometry, IHC-P, WB
Clonality	Polyclonal
Formulation	Purified polyclonal antibody supplied in PBS with 0.09% (W/V) sodium azide.
Storage Instructions	Maintain refrigerated at 2-8°C for up to 2 weeks. For long-term storage, store at -20°C in small aliquots to prevent freeze-thaw cycles.
Host	Rabbit
Uniprot ID	Q07866

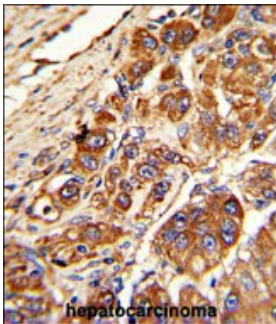
Technical Details

Immunogen	This KLC1 antibody is generated from rabbits immunized with a KLH conjugated synthetic peptide between 389-415 amino acids from the Central region of human KLC1.
Predicted Reactive Species	Rat
Isotype	Rabbit IgG
Purification	This antibody is purified through a protein A column, followed by peptide affinity purification.
Suggested Dilutions	WB: 1:1000 IHC-P: 1:100 FC: 1:10-1:50

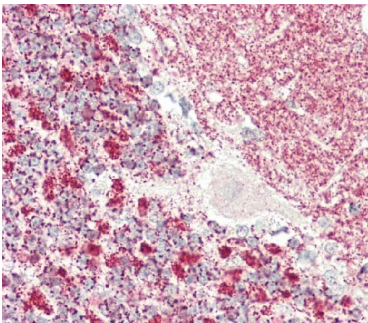
Anti-KLC1 Antibody (Center) (A04116-1) Images



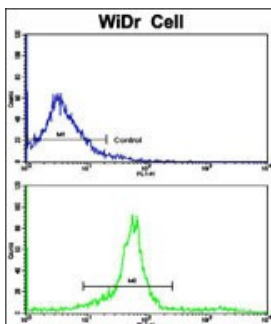
KLC1 Antibody (Center) western blot analysis in Hela cell line lysates (35ug/lane). This demonstrates the KLC1 antibody detected the KLC1 protein (arrow).



Formalin-fixed and paraffin-embedded human hepatocarcinoma with KLC1 Antibody (Center), which was peroxidase-conjugated to the secondary antibody, followed by DAB staining. This data demonstrates the use of this antibody for immunohistochemistry; clinical relevance has not been evaluated.



Formalin-fixed and paraffin-embedded H.brain, H.cerebellum tissue reacted with KLC1 Antibody (Center).



Flow cytometric analysis of WiDr cells using KLC1 Antibody (Center) (bottom histogram) compared to a negative control cell (top histogram). FITC-conjugated goat-anti-rabbit secondary antibodies were used for the analysis.

Submit a product review to Biocompare.com

Submit a review of this product to Biocompare.com to receive a \$20 Amazon.com giftcard! Your reviews help your fellow scientists make the right decisions. Thank you for your contribution.



Anti-KLC1 Antibody (Center)

For Research Use Only. Not for use in diagnostic procedures.