

Anti-Ras-related protein R-Ras2 RRAS2 Antibody

Catalog Number: A04117

About RRAS2

Activating mutations and overexpression of classical Ras subfamily members (K-RAS, N-RAS and H-RAS) have been widely investigated as key events in the development of human cancers. The RRAS subfamily of Ras-related proteins includes RRAS1, RRAS2 (TC21) and RRAS3 (M-Ras) show overall amino acid identity with the classical Ras subfamily (H-Ras, K-Ras and N-Ras) of 55–60%. RRAS2 is a small GTPbinding protein of the Ras superfamily of GTPases. It might transduce growth inhibitory signals across the cell membrane, exerting its effect through an effector shared with the Ras proteins. RRAS2 has high oncogenic potential and overexpression/mutations have been reported in several tumor tissues and cell lines.

Overview

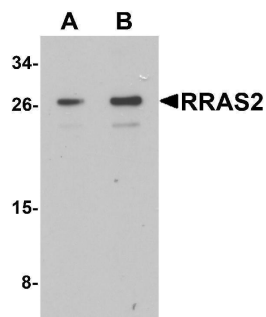
Product Name	Anti-Ras-related protein R-Ras2 RRAS2 Antibody
Reactive Species	Human, Mouse
Description	Boster Bio Anti-Ras-related protein R-Ras2 RRAS2 Antibody (Catalog # A04117). Tested in ELISA, WB applications. This antibody reacts with Human, Mouse.
Application	ELISA, WB
Clonality	Polyclonal
Formulation	RRAS2 Antibody is supplied in PBS containing 0.02% sodium azide.
Storage Instructions	RRAS2 antibody can be stored at 4°C for three months and -20°C, stable for up to one year.
Host	Rabbit
Uniprot ID	P62070

Technical Details

Immunogen	Rabbit polyclonal RRAS2 antibody was raised against a 16 amino acid peptide near the carboxy terminus of human RRAS2. The immunogen is located within the last 50 amino acids of RRAS2.
Predicted Reactive Species	Bovine
Cross Reactivity	Two isoforms of RRAS2 exists as a result of alternative splicing event.
Isotype	IgG
Form	Liquid
Concentration	1 mg/mL
Purification	RRAS2 Antibody is affinity chromatography purified via peptide column.
Suggested Dilutions	RRAS2 antibody can be used for detection of RRAS2 by Western blot at 1 - 2 ug/mL.

Antibody validated: Western Blot in human samples. All other applications and species not yet tested. Optimal dilutions for each application should be determined by the researcher.

Anti-Ras-related protein R-Ras2 RRAS2 Antibody (A04117) Images



Western blot analysis of RRAS2 in Jurkat cell lysate with RRAS2 antibody at (A) 1 and (B) 2 ug/mL

Submit a product review to Biocompare.com

Submit a review of this product to Biocompare.com to receive a \$20 Amazon.com giftcard! Your reviews help your fellow scientists make the right decisions. Thank you for your contribution.



Anti-Ras-related protein R-Ras2 RRAS2 Antibody

For Research Use Only. Not for use in diagnostic procedures.