

Anti-TOB1 (Ab-164) Antibody

Catalog Number: A04119

About TOB1

Anti-proliferative protein; the function is mediated by association with deadenylase subunits of the CCR4-NOT complex.

Matsuda S., Oncogene 12:705-713(1996).

Ebert L., Submitted (JUN-2004) to the EMBL/GenBank/DDBJ databases.

Kalnine N., Submitted (OCT-2004) to the EMBL/GenBank/DDBJ databases.

Overview

Product Name	Anti-TOB1 (Ab-164) Antibody
Reactive Species	Human
Description	Boster Bio Anti-TOB1 (Ab-164) Antibody (Catalog # A04119). Tested in WB, IHC applications. This antibody reacts with Human.
Application	IHC, WB
Clonality	Polyclonal
Formulation	Rabbit IgG in phosphate buffered saline (without Mg ²⁺ and Ca ²⁺), pH 7.4, 150mM NaCl, 0.02% sodium azide and 50% glycerol.
Storage Instructions	Store at -20°C for one year. For short term storage and frequent use, store at 4°C for up to one month. Avoid repeated freeze-thaw cycles.
Host	Rabbit
Uniprot ID	P50616

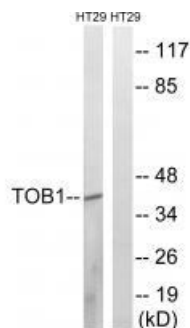
Technical Details

Immunogen	Synthesized non-phosphopeptide derived from human TOB1 around the phosphorylation site of serine 164 (A-V-S(p)-P-T).
Predicted Reactive Species	Boar, Bovine, Canine, Golden Hamster
Isotype	IgG
Form	Liquid
Concentration	1 mg/ml
Purification	The antibody was affinity-purified from rabbit antiserum by affinity-chromatography using epitope-specific immunogen.

Suggested Dilutions

Western blotting: 1:500~1:3000
Immunohistochemistry: 1:50~1:100

Anti-TOB1 (Ab-164) Antibody (A04119) Images



Western blot analysis of extracts from HT-29 cells, treated with serum (20%, 15mins), using TOB1 (Ab-164) antibody A04119.



Immunohistochemistry analysis of paraffin-embedded human brain tissue using TOB1 (Ab-164) antibody A04119.

Submit a product review to [Biocompare.com](https://www.biocompare.com)

Submit a review of this product to [Biocompare.com](https://www.biocompare.com) to receive a \$20 Amazon.com giftcard! Your reviews help your fellow scientists make the right decisions. Thank you for your contribution.



Anti-TOB1 (Ab-164) Antibody

For Research Use Only. Not for use in diagnostic procedures.