

Anti-CATSPER1 Antibody

Catalog Number: A04156

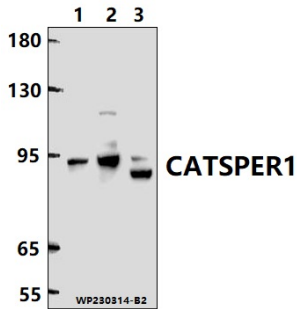
Overview

Product Name	Anti-CATSPER1 Antibody
Reactive Species	Human, Mouse, Rat
Description	Boster Bio Anti-CATSPER1 Antibody catalog # A04156. Tested in WB applications. This antibody reacts with Human,Mouse,Rat.
Application	WB
Clonality	Polyclonal
Formulation	Rabbit IgG, 1mg/ml in PBS with 0.02% sodium azide, 50% glycerol, pH7.2
Storage Instructions	Store at -20°C for one year. For short term storage and frequent use, store at 4°C for up to one month. Avoid repeated freeze-thaw cycles.
Host	Rabbit
Uniprot ID	Q8NEC5

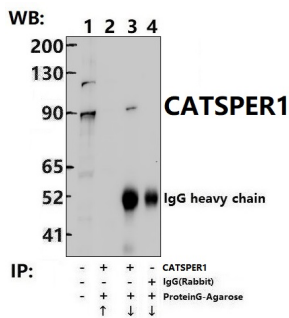
Technical Details

Immunogen	A synthetic peptide corresponding to residues in Human CATSPER1
Isotype	IgG
Form	Liquid
Concentration	1 mg/ml
Purification	The antibody was affinity-purified from rabbit antiserum by affinity-chromatography using epitope-specific immunogen and the purity is > 95% (by SDS-PAGE).
Suggested Dilutions	WB: 1:500-1:2000

Anti-CATSPER1 Antibody (A04156) Images



Western blot (WB) analysis of CATSPER1 polyclonal antibody at 1:1000 dilution Lane1:A549 whole cell lysate Lane2:HeLa whole cell lysate Lane3:SP2/O whole cell lysate



Immunoprecipitation of HepG2 cell lysates using CATSPER1 pAb (Sepharose Bead Conjugate)#BD0048 (lane 2 and lane 3) and Nonspecific IgG Control (Sepharose Bead Conjugate)#BD0048 (lane 4) .Lane 1 is 30% input. The western blot was probed using CATSPER1 pAb.

Submit a product review to Biocompare.com

Submit a review of this product to Biocompare.com to receive a \$20 Amazon.com giftcard! Your reviews help your fellow scientists make the right decisions. Thank you for your contribution.



Anti-CATSPER1 Antibody

For Research Use Only. Not for use in diagnostic procedures.