

## Anti-PPP2R2A Antibody (N-term)

Catalog Number: A04159

### About PPP2R2A

The B regulatory subunit might modulate substrate selectivity and catalytic activity, and also might direct the localization of the catalytic enzyme to a particular subcellular compartment.

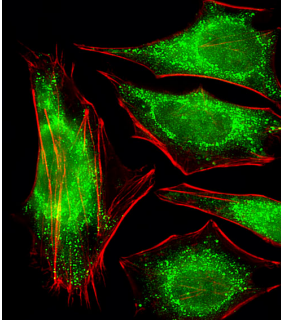
### Overview

Product Name	Anti-PPP2R2A Antibody (N-term)
Reactive Species	Human
Description	Boster Bio Anti-PPP2R2A Antibody (N-term) (Catalog # A04159). Tested in IHC-P, IF, WB application(s). This antibody reacts with Human.
Application	IF, IHC-P, WB
Clonality	Polyclonal
Formulation	Purified polyclonal antibody supplied in PBS with 0.09% (W/V) sodium azide.
Storage Instructions	Maintain refrigerated at 2-8°C for up to 2 weeks. For long-term storage, store at -20°C in small aliquots to prevent freeze-thaw cycles.
Host	Rabbit
Uniprot ID	P63151

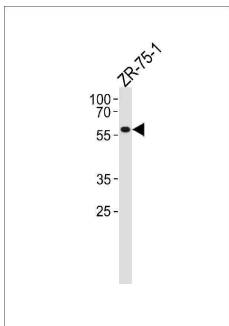
### Technical Details

Immunogen	This PPP2R2A antibody is generated from rabbits immunized with a KLH conjugated synthetic peptide between 43-71 amino acids from the N-terminal region of human PPP2R2A.
Predicted Reactive Species	Monkey, Mouse, Pig, Rabbit, Rat
Isotype	Rabbit IgG
Purification	This antibody is purified through a protein A column, followed by peptide affinity purification.
Suggested Dilutions	IF: 1:25 WB: 1:1000 IHC-P: 1:25

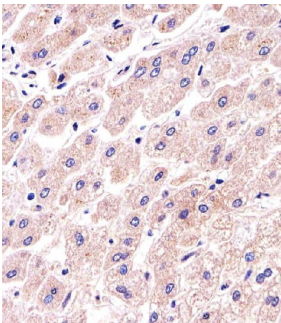
## Anti-PPP2R2A Antibody (N-term) (A04159) Images



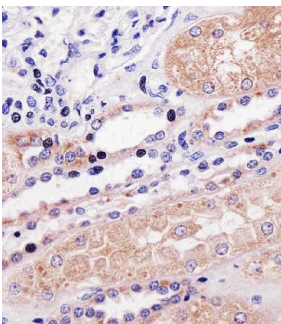
Fluorescent image of HeLa cells stained with PPP2R2A Antibody (N-term). A04159 was diluted at 1:25 dilution. An Alexa Fluor 488-conjugated goat anti-rabbit IgG at 1:400 dilution was used as the secondary antibody (green). Cytoplasmic actin was counterstained with Alexa Fluor® 555 conjugated with Phalloidin (red).



PPP2R2A Antibody (N-term) (Cat. #A04159) western blot analysis in ZR-75-1 cell line lysates (35ug/lane). This demonstrates the PPP2R2A antibody detected the PPP2R2A protein (arrow).



Immunohistochemical analysis of paraffin-embedded H. liver section using PPP2R2A Antibody (N-term) (Cat#A04159). A04159 was diluted at 1:25 dilution. A undiluted biotinylated goat polyvalent antibody was used as the secondary, followed by DAB staining.



Immunohistochemical analysis of paraffin-embedded H. kidney section using PPP2R2A Antibody (N-term) (Cat#A04159). A04159 was diluted at 1:25 dilution. A undiluted biotinylated goat polyvalent antibody was used as the secondary, followed by DAB staining.

**Submit a product review to Biocompare.com**

Submit a review of this product to Biocompare.com to receive a \$20 Amazon.com giftcard! Your reviews help your fellow scientists make the right decisions. Thank you for your contribution.



Anti-PPP2R2A Antibody (N-term)

For Research Use Only. Not for use in diagnostic procedures.