

Anti-TSLP Receptor Crlf2 Antibody

Catalog Number: A04167

About CRLF2

Thymic stromal lymphopoietin (TSLP) has recently been identified as an important factor capable of driving dendritic cell maturation and activation. It is involved in the positive selection of regulatory T cells, maintenance of peripheral CD4+ T cell homeostasis and the induction of CD4+ T cell-mediated allergic reaction. TSLP is also capable of supporting the growth of fetal liver and adult B cell progenitors and their differentiation to the IgM-positive stage of B cell development. Its receptor TSLP-R will bind TSLP in a low-affinity fashion in transfected cells; co-transfection with IL-7R-alpha cDNA results in high-affinity binding and a functional heteromeric complex. This heteromeric receptor requires stat5 for TSLP-mediated signal transduction and is inhibited by SOCS-1.

Overview

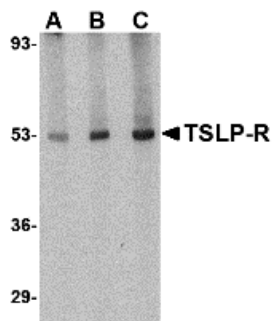
Product Name	Anti-TSLP Receptor Crlf2 Antibody
Reactive Species	Human
Description	Boster Bio Anti-TSLP Receptor Crlf2 Antibody (Catalog # A04167). Tested in ELISA, WB, IHC-P, IF applications. This antibody reacts with Human.
Application	ELISA, IF, IHC-P, WB
Clonality	Polyclonal
Formulation	TSLP Receptor Antibody is supplied in PBS containing 0.02% sodium azide.
Storage Instructions	TSLP Receptor antibody can be stored at 4°C for three months and -20°C, stable for up to one year. Avoid repeated freeze-thaw cycles. Antibodies should not be exposed to prolonged high temperatures.
Host	Rabbit
Uniprot ID	Q8CII9

Technical Details

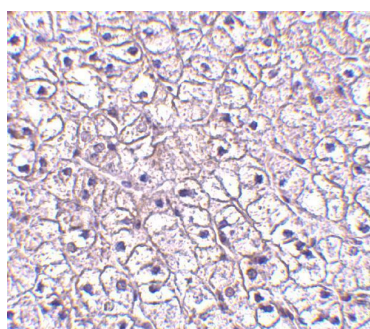
Immunogen	TSLP Receptor antibody was raised against a 19 amino acid synthetic peptide from near the center of human TSLP receptor. The immunogen is located within amino acids 140 - 190 of TSLP Receptor.
Predicted Reactive Species	Rat
Cross Reactivity	At least two isoforms of TSLP-R are known to exist; this antibody will recognize both isoforms.
Isotype	IgG
Form	Liquid
Concentration	1 mg/mL

Purification	TSLP Receptor Antibody is affinity chromatography purified via peptide column.
Suggested Dilutions	<p>TSLP-R antibody can be used for detection of TSLP-R by Western blot at 0.5 - 1 ug/mL. Antibody can also be used for immunohistochemistry starting at 5 ug/mL. For immunofluorescence start at 20 ug/mL.</p> <p>Antibody validated: Western Blot in human samples; Immunohistochemistry in human samples and Immunofluorescence in human samples. All other applications and species not yet tested. Optimal dilutions for each application should be determined by the researcher.</p>

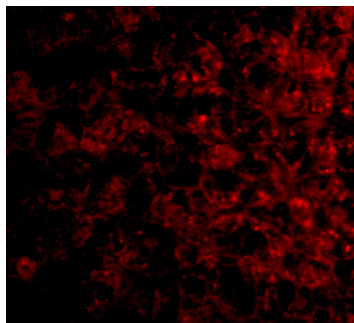
Anti-TSLP Receptor Crf2 Antibody (A04167) Images



Western blot analysis of TSLP Receptor in human liver tissue lysate with TSLP Receptor antibody at (A) 0.5, (B) 1 and (C) 2 ug/mL.



Immunohistochemistry of TSLP-R in human liver tissue with TSLP-R antibody at 5 ug/mL.



Immunofluorescence of TSLP Receptor in Human Liver tissue with TSLP Receptor antibody at 20 ug/mL.

Submit a product review to Biocompare.com

Submit a review of this product to Biocompare.com to receive a \$20 Amazon.com giftcard! Your reviews help your fellow scientists make the right decisions. Thank you for your contribution.



Anti-TSLP Receptor Crf2 Antibody

For Research Use Only. Not for use in diagnostic procedures.