

## Anti-CRLF2 Antibody Picoband®

Catalog Number: A04167-1

### About CRLF2

Cytokine receptor-like factor 2 is a protein that in humans is encoded by the CRLF2 gene. This gene encodes a member of the type I cytokine receptor family. The encoded protein is a receptor for thymic stromal lymphopoietin (TSLP). Together with the interleukin 7 receptor (IL7R), the encoded protein and TSLP activate STAT3, STAT5, and JAK2 pathways, which control processes such as cell proliferation and development of the hematopoietic system. Rearrangement of this gene with immunoglobulin heavy chain gene (IGH) on chromosome 14, or with P2Y purinoceptor 8 gene (P2RY8) on the same X or Y chromosomes is associated with B-progenitor acute lymphoblastic leukemia (ALL) and Down syndrome ALL. Alternatively spliced transcript variants have been found for this gene.

### Overview

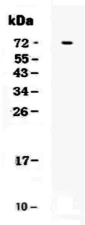
|                      |   |
|----------------------|---|
| Product Name         | Anti-CRLF2 Antibody Picoband®   |
| Reactive Species     | Human   |
| Description          | Boster Bio Anti-CRLF2 Antibody Picoband® catalog # A04167-1. Tested in ELISA, WB applications. This antibody reacts with Human. The brand Picoband indicates this is a premium antibody that guarantees superior quality, high affinity, and strong signals with minimal background in Western blot applications. Only our best-performing antibodies are designated as Picoband, ensuring unmatched performance. |
| Application          | WB, ELISA (Cap)   |
| Clonality            | Polyclonal  |
| Formulation          | Each vial contains 4mg Trehalose, 0.9mg NaCl, 0.2mg Na <sub>2</sub> HPO <sub>4</sub> , 0.05mg NaN <sub>3</sub> .  |
| Storage Instructions | Store at -20°C for one year from date of receipt. After reconstitution, at 4°C for one month. It can also be aliquotted and stored frozen at -20°C for six months. Avoid repeated freeze-thaw cycles.   |
| Host                 | Rabbit  |
| Uniprot ID           | Q9HC73  |

### Technical Details

|                               |   |
|-------------------------------|---|
| Immunogen                     | E. coli-derived human CRLF2 recombinant protein (Position: A26-K231).                           |
| Recommended Detection Systems | Boster recommends Enhanced Chemiluminescent Kit with anti-Rabbit IgG (EK1002) for Western blot. |
| Cross Reactivity              | No cross-reactivity with other proteins.  |
| Isotype                       | Rabbit IgG  |
| Form                          | Lyophilized   |

|                     |   |
|---------------------|---|
| Concentration       | Adding 0.2 ml of distilled water will yield a concentration of 500 ug/ml. |
| Purification        | Immunogen affinity purified.  |
| Suggested Dilutions | Western blot, 0.1-0.5ug/ml<br>ELISA (Cap), 1-5ug/ml                       |

## Anti-CRLF2 Antibody Picoband® (A04167-1) Images



Western blot analysis of CRLF2 using anti-CRLF2 antibody (A04167-1). Electrophoresis was performed on a 5-20% SDS-PAGE gel at 70V (Stacking gel) / 90V (Resolving gel) for 2-3 hours. Lane 1: recombinant human CRLF2 protein 1ng. After Electrophoresis, proteins were transferred to a Nitrocellulose membrane at 150mA for 50-90 minutes. Blocked the membrane with 5% Non-fat Milk/ TBS for 1.5 hour at RT. The membrane was incubated with rabbit anti-CRLF2 antigen affinity purified polyclonal antibody (Catalog # A04167-1) at 0.5 ug/mL overnight at 4°C, then washed with TBS-0.1%Tween 3 times with 5 minutes each and probed with a goat anti-rabbit IgG-HRP secondary antibody at a dilution of 1:10000 for 1.5 hour at RT. The signal is developed using an Enhanced Chemiluminescent detection (ECL) kit (Catalog # EK1002) with Tanon 5200 system. A specific band was detected for CRLF2 at approximately 65-75KD. The expected band size for CRLF2 is at 51KD.

### Submit a product review to Biocompare.com

Submit a review of this product to Biocompare.com to receive a \$20 Amazon.com giftcard! Your reviews help your fellow scientists make the right decisions. Thank you for your contribution.



Anti-CRLF2 Antibody

For Research Use Only. Not for use in diagnostic procedures.