

Anti-TSLP Receptor Crlf2 Antibody

Catalog Number: A04167-2

About CRLF2

Thymic stromal lymphopoietin (TSLP) has recently been identified as an important factor capable of driving dendritic cell maturation and activation. It is involved in the positive selection of regulatory T cells, maintenance of peripheral CD4+ T cell homeostasis and the induction of CD4+ T cell-mediated allergic reaction. TSLP is also capable of supporting the growth of fetal liver and adult B cell progenitors and their differentiation to the IgM-positive stage of B cell development. Its receptor TSLP-R will bind TSLP in a low-affinity fashion in transfected cells; co-transfection with IL-7R-alpha cDNA results in high-affinity binding and a functional heteromeric complex. This heteromeric receptor requires stat5 for TSLP-mediated signal transduction and is inhibited by SOCS-1. The approximately 75 kDa band seen in the immunoblot may be a post-translationally modified form of TSLP-R.

Overview

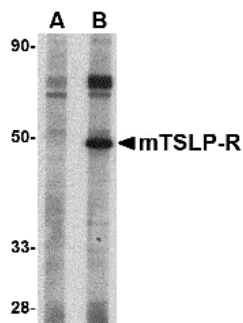
Product Name	Anti-TSLP Receptor Crlf2 Antibody
Reactive Species	Mouse
Description	Boster Bio Anti-TSLP Receptor Crlf2 Antibody (Catalog # A04167-2). Tested in ELISA, WB, IF applications. This antibody reacts with Mouse.
Application	ELISA, IF, WB
Clonality	Polyclonal
Formulation	TSLP Receptor Antibody is supplied in PBS containing 0.02% sodium azide.
Storage Instructions	TSLP Receptor antibody can be stored at 4°C for three months and -20°C, stable for up to one year. Avoid repeated freeze-thaw cycles. Antibodies should not be exposed to prolonged high temperatures.
Host	Rabbit
Uniprot ID	Q8CII9

Technical Details

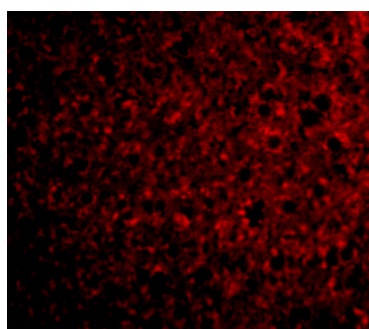
Immunogen	TSLP receptor antibody was raised against a 21 amino acid synthetic peptide from near the center of mouse TSLP receptor. The immunogen is located within amino acids 140 - 190 of TSLP Receptor.
Predicted Reactive Species	Rat
Isotype	IgG
Form	Liquid
Concentration	1 mg/mL

Purification	TSLP Receptor Antibody is affinity chromatography purified via peptide column.
Suggested Dilutions	TSLP receptor antibody can be used for detection of TSLP receptor by Western blot at 1 ug/mL. For immunofluorescence start at 20 ug/mL. Antibody validated: Western Blot in mouse samples and Immunofluorescence in mouse samples. All other applications and species not yet tested. Optimal dilutions for each application should be determined by the researcher.

Anti-TSLP Receptor Crf2 Antibody (A04167-2) Images



Western blot analysis of TSLP Receptor in mouse heart tissue lysate with TSLP Receptor antibody at 1 ug/mL in (A) the presence and (B) the absence of blocking peptide.



Immunofluorescence of TSLP Receptor in Mouse Liver cells with TSLP Receptor antibody at 20 ug/mL.

Submit a product review to [Biocompare.com](https://www.biocompare.com)

Submit a review of this product to [Biocompare.com](https://www.biocompare.com) to receive a \$20 Amazon.com giftcard! Your reviews help your fellow scientists make the right decisions. Thank you for your contribution.



Anti-TSLP Receptor Crf2 Antibody

For Research Use Only. Not for use in diagnostic procedures.