

Anti-KLRC1 Antibody (C-term)

Catalog Number: A04175-2

About KLRC1

Natural killer (NK) cells are lymphocytes that can mediate lysis of certain tumor cells and virus-infected cells without previous activation. They can also regulate specific humoral and cell-mediated immunity. This protein belongs to the killer cell lectin-like receptor family, also called NKG2 family, which is a group of transmembrane proteins preferentially expressed in NK cells. This family of proteins is characterized by the type II membrane orientation and the presence of a C-type lectin domain. This protein forms a complex with another family member, KLRD1/CD94, and has been implicated in the recognition of the MHC class I HLA-E molecules in NK cells.

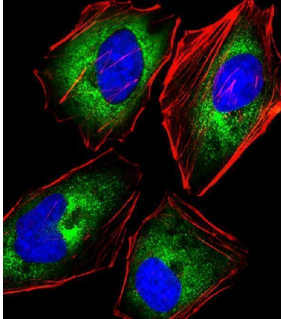
Overview

Product Name	Anti-KLRC1 Antibody (C-term)
Reactive Species	Human
Description	Boster Bio Anti-KLRC1 Antibody (C-term) (Catalog # A04175-2). Tested in WB, IHC-P, Flow Cytometry, IF application(s). This antibody reacts with Human.
Application	Flow Cytometry, IF, IHC-P, WB
Clonality	Polyclonal
Formulation	Purified polyclonal antibody supplied in PBS with 0.09% (W/V) sodium azide.
Storage Instructions	Maintain refrigerated at 2-8°C for up to 2 weeks. For long-term storage, store at -20°C in small aliquots to prevent freeze-thaw cycles.
Host	Rabbit
Uniprot ID	P26715

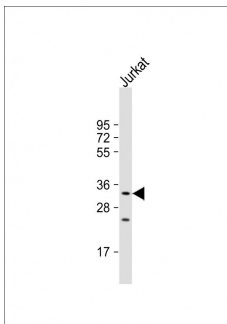
Technical Details

Immunogen	This KLRC1 antibody is generated from rabbits immunized with a KLH conjugated synthetic peptide between 180-206 amino acids from the C-terminal region of human KLRC1.
Predicted Reactive Species	Bovine
Isotype	Rabbit IgG
Purification	This antibody is purified through a protein A column, followed by peptide affinity purification.
Suggested Dilutions	IF: 1:25 WB: 1:2000 IHC-P: 1:50-1:100 FC: 1:25

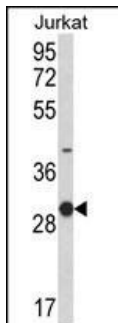
Anti-KLRC1 Antibody (C-term) (A04175-2) Images



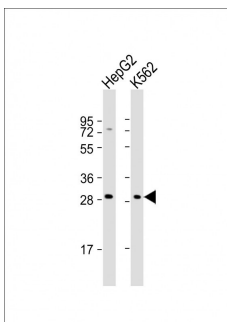
Immunofluorescent analysis of 4% paraformaldehyde-fixed, 0.1% Triton X-100 permeabilized HeLa (human cervical epithelial adenocarcinoma cell line) cells labeling KLRC1 with A04175-2 at 1/25 dilution, followed by Dylight® 488-conjugated goat anti-rabbit IgG secondary antibody at 1/200 dilution (green). Immunofluorescence image showing cytoplasm staining on HeLa cell line. Cytoplasmic actin is detected with Dylight® 554 Phalloidin at 1/100 dilution (red). The nuclear counter stain is DAPI (blue).



Anti-KLRC1 Antibody (C-term) at 1:2000 dilution + Jurkat whole cell lysates/proteins at 20 µg per lane. Secondary Goat Anti-Rabbit IgG, (H+L), Peroxidase conjugated at 1/10000 dilution. Predicted band size : 26 kDa. Blocking/Dilution buffer: 5% NFD/MTBST.

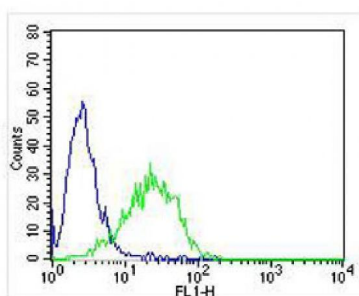
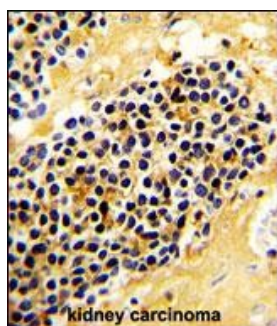


Western blot analysis of KLRC1 Antibody (C-term) (Cat. #A04175-2) in Jurkat cell line lysates (35ug/lane). KLRC1 (arrow) was detected using the purified Pab.



All lanes : Anti-KLRC1 Antibody (C-term) at 1:2000 dilution
Lane 1: HepG2 whole cell lysates
Lane 2: K562 whole cell lysates
Lysates/proteins at 20 µg per lane.
Secondary Goat Anti-Rabbit IgG, (H+L), Peroxidase conjugated at 1/10000 dilution
Predicted band size : 26 kDa
Blocking/Dilution buffer: 5% NFD/MTBST.

Formalin-fixed and paraffin-embedded human kidney carcinoma with KLRC1 Antibody (C-term), which was peroxidase-conjugated to the secondary antibody, followed by DAB staining. This data demonstrates the use of this antibody for immunohistochemistry; clinical relevance has not been evaluated.



Overlay histogram showing Jurkat cells stained with A04175-2 (green line). The cells were fixed with 2% paraformaldehyde (10 min). The cells were then incubated in 2% bovine serum albumin to block non-specific protein-protein interactions followed by the antibody (A04175-2, 1:25 dilution) for 60 min at 37°C. The secondary antibody used was Goat-Anti-Rabbit IgG, DyLight® 488 Conjugated Highly Cross-Adsorbed at 1/400 dilution for 40 min at 37°C. Isotype control antibody (blue line) was rabbit IgG (1ug/1x10⁶ cells) used under the same conditions. Acquisition of >10, 000 events was performed.

Submit a product review to Biocompare.com

Submit a review of this product to Biocompare.com to receive a \$20 Amazon.com giftcard! Your reviews help your fellow scientists make the right decisions. Thank you for your contribution.



Anti-KLRC1 Antibody (C-term)

For Research Use Only. Not for use in diagnostic procedures.