

Anti-ROS (phospho-Y2114) ROS1 Antibody

Catalog Number: A04186Y2114

About ROS1

Plays an important role in the regulation of cell proliferation, cell differentiation and cell migration. Required for normal ossification and bone development. Stimulates hepatic and intestinal proliferation.

Hu M.C.-T., Mol. Cell. Biol. 18:6063-6074(1998).

Ohbayashi N., J. Biol. Chem. 273:18161-18164(1998).

Clark H.F., Genome Res. 13:2265-2270(2003).

Overview

Product Name	Anti-ROS (phospho-Y2114) ROS1 Antibody
Reactive Species	Human, Mouse, Rat
Description	Boster Bio Anti-ROS (phospho-Y2114) ROS1 Antibody catalog # A04186Y2114. Tested in WB applications. This antibody reacts with Human,Mouse,Rat.
Application	WB
Clonality	Polyclonal
Formulation	Rabbit IgG, 1mg/ml in PBS with 0.02% sodium azide, 50% glycerol, pH7.2
Storage Instructions	Store at -20°C for one year. For short term storage and frequent use, store at 4°C for up to one month. Avoid repeated freeze-thaw cycles.
Host	Rabbit
Uniprot ID	P08922

Technical Details

Immunogen	Synthesized peptide derived from human ROS1 protein.
Predicted Reactive Species	Boar, Bovine, Canine, Golden Hamster
Isotype	IgG
Form	Liquid
Concentration	1 mg/ml
Purification	The antibody was affinity-purified from rabbit antiserum by affinity-chromatography using epitope-specific immunogen and the purity is > 95% (by SDS-PAGE).

Suggested Dilutions

Dilute the sample so that the expected range of concentrations fall within the detection range of this kit.

If the expected range of concentration is unknown, a pilot test should be conducted to decide the optimal dilution ratio for your samples.

Some PubMed article(s) citing the expression level of this target are as follows:

Boster Bio's internal QC testing used:

WB: 1:500-1:1000

Anti-ROS (phospho-Y2114) ROS1 Antibody (A04186Y2114) Images

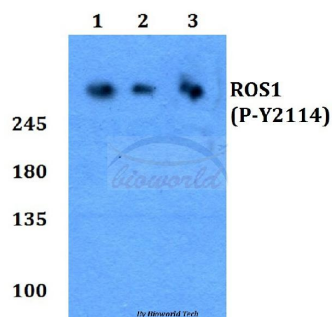


Figure 1. Western blotting validation for Anti-ROS (phospho-Y2114) ROS1 Antibody A04186Y2114

Western blot (WB) analysis of p-ROS (Y2114) polyclonal antibody at 1:500 dilution

Lane1:SKOVCAR whole cell lysate

Lane2:Raw264.7 whole cell lysate

Lane3:PC12 whole cell lysate

Electrophoresis was performed on a SDS-PAGE gel. To determine SDS-PAGE gel concentration

Submit a product review to Biocompare.com

Submit a review of this product to Biocompare.com to receive a \$20 Amazon.com giftcard! Your reviews help your fellow scientists make the right decisions. Thank you for your contribution.



Anti-ROS (phospho-Y2114) ROS1 Antibody