

Anti-PACSIN2 Antibody (C-term)

Catalog Number: A04211-1

About PACSIN2

PACSIN may play a role in vesicle formation and transport. This protein homo- and hetero-aggregates with other PACSINs. It also binds dynamin 1, synaptojanin, synapsin 1 and the neural Wiskott-Aldrich syndrome protein (N-WASP). The protein exhibits a vesicle-like cytoplasmic distribution and is ubiquitously expressed. PACSIN is phosphorylated by casein kinase 2 (CK2) and protein kinase C (PKC). The protein contains 1 FCH domain and 1 SH3 domain.

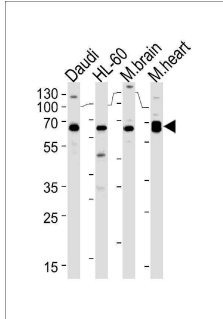
Overview

Product Name	Anti-PACSIN2 Antibody (C-term)
Reactive Species	Human, Mouse
Description	Boster Bio Anti-PACSIN2 Antibody (C-term) (Catalog # A04211-1). Tested in WB, IHC-P application(s). This antibody reacts with Human, Mouse.
Application	IHC-P, WB
Clonality	Polyclonal
Formulation	Purified polyclonal antibody supplied in PBS with 0.09% (W/V) sodium azide.
Storage Instructions	Maintain refrigerated at 2-8°C for up to 2 weeks. For long-term storage, store at -20°C in small aliquots to prevent freeze-thaw cycles.
Host	Rabbit
Uniprot ID	Q9UNF0

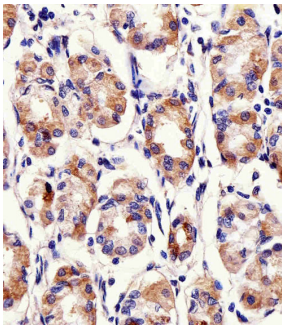
Technical Details

Immunogen	This PACSIN2 antibody is generated from rabbits immunized with a KLH conjugated synthetic peptide between 342-371 amino acids from the C-terminal region of human PACSIN2.
Predicted Reactive Species	Monkey, Mouse, Pig, Rabbit, Rat
Isotype	Rabbit IgG
Purification	This antibody is purified through a protein A column, followed by peptide affinity purification.
Suggested Dilutions	WB: 1:1000 IHC-P: 1:50-1:100

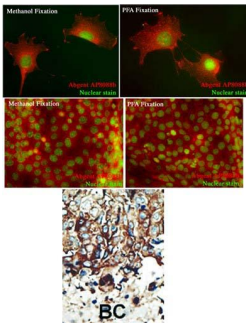
Anti-PACSIN2 Antibody (C-term) (A04211-1) Images



PACSIN2 Antibody (S357) western blot analysis in Daudi,HL-60 cell line and mouse brain, rat heart lysates (35ug/lane). This demonstrates the PACSIN2 antibody detected the PACSIN2 protein (arrow).



Immunohistochemical analysis of paraffin-embedded H. stomach section using PACSIN2 Antibody (C-term). A04211-1 was diluted at 1:25 dilution. A peroxidase-conjugated goat anti-rabbit IgG at 1:400 dilution was used as the secondary antibody, followed by DAB staining.



Formalin-fixed and paraffin-embedded human cancer tissue reacted with the primary antibody, which was peroxidase-conjugated to the secondary antibody, followed by DAB staining. This data demonstrates the use of this antibody for immunohistochemistry; clinical relevance has not been evaluated. BC = breast carcinoma; HC = hepatocarcinoma.

Submit a product review to [Biocompare.com](https://www.biocompare.com)

Submit a review of this product to [Biocompare.com](https://www.biocompare.com) to receive a \$20 Amazon.com giftcard! Your reviews help your fellow scientists make the right decisions. Thank you for your contribution.



Anti-PACSIN2 Antibody (C-term)

For Research Use Only. Not for use in diagnostic procedures.