

Anti-BIG2 (L1527) ARFGEF2 Antibody

Catalog Number: A04212-1

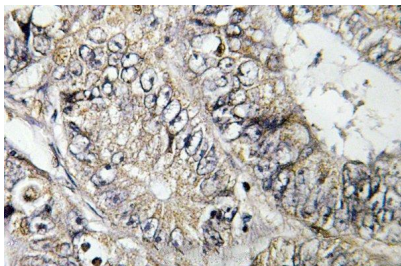
Overview

Product Name	Anti-BIG2 (L1527) ARFGEF2 Antibody
Reactive Species	Human, Mouse, Rat
Description	Boster Bio Anti-BIG2 (L1527) ARFGEF2 Antibody catalog # A04212-1. Tested in IHC,IF applications. This antibody reacts with Human,Mouse,Rat.
Application	IF, IHC
Clonality	Polyclonal
Formulation	Rabbit IgG, 1mg/ml in PBS with 0.02% sodium azide, 50% glycerol, pH7.2
Storage Instructions	Store at -20°C for one year. For short term storage and frequent use, store at 4°C for up to one month. Avoid repeated freeze-thaw cycles.
Host	Rabbit
Uniprot ID	Q9Y6D5

Technical Details

Immunogen	Synthetic peptide, corresponding to amino acids 1500-1550 of Human BIG2.
Isotype	IgG
Form	Liquid
Concentration	1 mg/ml
Purification	The antibody was affinity-purified from rabbit antiserum by affinity-chromatography using epitope-specific immunogen and the purity is > 95% (by SDS-PAGE).
Suggested Dilutions	IHC: 1:50-1:200 IF: 1:50-1:200

Anti-BIG2 (L1527) ARFGEF2 Antibody (A04212-1) Images



Immunohistochemistry (IHC) analyzes of BIG2 (L1527) pAb in paraffin-embedded human colon carcinoma tissue.

Submit a product review to [Biocompare.com](https://www.biocompare.com)

Submit a review of this product to [Biocompare.com](https://www.biocompare.com) to receive a \$20 Amazon.com giftcard! Your reviews help your fellow scientists make the right decisions. Thank you for your contribution.



Anti-BIG2 (L1527) ARFGEF2 Antibody

For Research Use Only. Not for use in diagnostic procedures.