

Anti-TSPY1L Antibody

Catalog Number: A04215

About TSPY1

Testis-specific protein on Y chromosome (TSPY1) is an ampliconic gene on the Y chromosome that has been associated with gonadoblastoma. Recent experiments have shown that in androgen-dependent testicular germ-cell tumors, TSPY1 can repress the androgen-bound androgen receptor (AR), a member of the nuclear steroid hormone receptor family that acts as a ligand-inducible transcription factor, suggesting that TSPY1 is a repressor of cell proliferation in germ-cell tumors and potentially in normal gonadal cells during early development. Two distinct isoforms of TSPY1, TSPY1L and TSPY1S, are known to exist.

Overview

Product Name	Anti-TSPY1L Antibody
Reactive Species	Human, Mouse
Description	Boster Bio Anti-TSPY1L Antibody (Catalog # A04215). Tested in ELISA, WB applications. This antibody reacts with Human, Mouse.
Application	ELISA, WB
Clonality	Polyclonal
Formulation	TSPY1L Antibody is supplied in PBS containing 0.02% sodium azide.
Storage Instructions	TSPY1L antibody can be stored at 4°C for three months and -20°C, stable for up to one year. Avoid repeated freeze-thaw cycles. Antibodies should not be exposed to prolonged high temperatures.
Host	Rabbit
Uniprot ID	Q01534

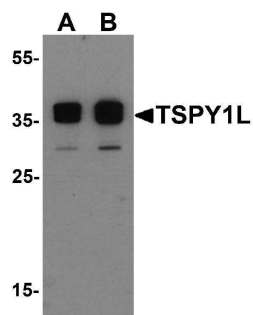
Technical Details

Immunogen	Rabbit polyclonal TSPY1L antibody was raised against a 20 amino acid peptide near the carboxy terminus of human TSPY1L. The immunogen is located within the last 50 amino acids of TSPY1L.
Predicted Reactive Species	Rat
Cross Reactivity	TSPY1L antibody is human and mouse reactive. At least three isoforms of TSPY1 are known to exist; this antibody will detect only TSPY1L.
Isotype	IgG
Form	Liquid
Concentration	1 mg/mL
Purification	TSPY1L Antibody is affinity chromatography purified via peptide column.

Suggested Dilutions

TSPY1L antibody can be used for detection of TSPY1L by Western blot at 0.5 - 1 ug/mL.
Antibody validated: Western Blot in mouse samples. All other applications and species not yet tested. Optimal dilutions for each application should be determined by the researcher.

Anti-TSPY1L Antibody (A04215) Images



Western blot analysis of TSPY1L in A20 cell lysate with TSPY1L antibody at (A) 0.5 and (B) 1 ug/mL

Submit a product review to Biocompare.com

Submit a review of this product to Biocompare.com to receive a \$20 Amazon.com giftcard! Your reviews help your fellow scientists make the right decisions. Thank you for your contribution.



Anti-TSPY1L Antibody

For Research Use Only. Not for use in diagnostic procedures.