

## Anti-14-3-3 Eta (K81) YWHAH Antibody

Catalog Number: A04219-1

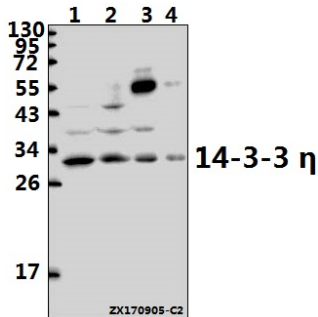
### Overview

Product Name	Anti-14-3-3 Eta (K81) YWHAH Antibody
Reactive Species	Human, Mouse, Rat
Description	Boster Bio Anti-14-3-3 Eta (K81) YWHAH Antibody catalog # A04219-1. Tested in WB,IHC,IF applications. This antibody reacts with Human,Mouse,Rat.
Application	IF, IHC, WB
Clonality	Polyclonal
Formulation	Rabbit IgG, 1mg/ml in PBS with 0.02% sodium azide, 50% glycerol, pH7.2
Storage Instructions	Store at -20°C for one year. For short term storage and frequent use, store at 4°C for up to one month. Avoid repeated freeze-thaw cycles.
Host	Rabbit
Uniprot ID	Q04917

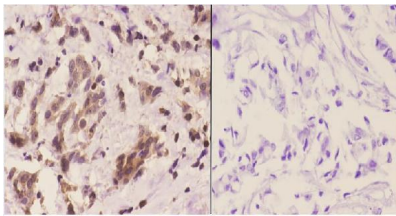
### Technical Details

Immunogen	Synthetic peptide, corresponding to amino acids 50-100 of Human 14-3-3 eta.
Isotype	IgG
Form	Liquid
Concentration	1 mg/ml
Purification	The antibody was affinity-purified from rabbit antiserum by affinity-chromatography using epitope-specific immunogen and the purity is > 95% (by SDS-PAGE).
Suggested Dilutions	WB: 1:500-1:1000 IHC: 1:50-1:200 IF: 1:50-1:200

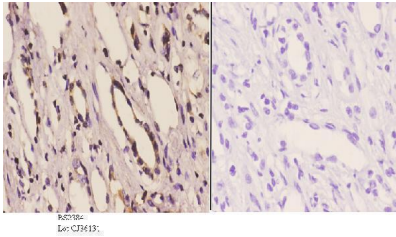
## Anti-14-3-3 Eta (K81) YWHAH Antibody (A04219-1) Images



Western blot (WB) analysis of 14-3-3 eta (K81) pAb at 1:1000 dilution Lane1:PC3 whole cell lysate(40ug) Lane2:HEK293T whole cell lysate(40ug) Lane3:The Brain tissue lysate of Mouse(20ug) Lane4:The Brain tissue lysate of Rat(20ug)



Immunohistochemistry (IHC) analyzes of 14-3-3 eta (K81) pAb in paraffin-embedded human breast carcinoma tissue at 1:50. showing cytoplasmic and nucleus staining. Negative control (the right) Using PBS instead of primary antibody, secondary antibody is Goat Anti-Rabbit IgG-biotin followed by avidin-peroxidase.



Immunohistochemistry (IHC) analyzes of 14-3-3 eta (K81) pAb in paraffin-embedded human kidney carcinoma tissue at 1:50. showing cytoplasmic and nucleus staining. Negative control (the right) Using PBS instead of primary antibody, secondary antibody is Goat Anti-Rabbit IgG-biotin followed by avidin-peroxidase.

### Submit a product review to [Biocompare.com](https://www.biocompare.com)

Submit a review of this product to [Biocompare.com](https://www.biocompare.com) to receive a \$20 Amazon.com giftcard! Your reviews help your fellow scientists make the right decisions. Thank you for your contribution.



Anti-14-3-3 Eta (K81) YWHAH Antibody

For Research Use Only. Not for use in diagnostic procedures.