

## Anti-Peptide YY/PYY Antibody Picoband™

Catalog Number: A04223-1

### About PYY

Peptide YY (PYY), also known as peptide tyrosine tyrosine, is a peptide that in humans is encoded by the PYY gene. This gene encodes a member of the neuropeptide Y (NPY) family of peptides. The encoded preproprotein is proteolytically processed to generate two alternative peptide products that differ in length by three amino acids. These peptides, secreted by endocrine cells in the gut, exhibit different binding affinities for each of the neuropeptide Y receptors. Binding of the encoded peptides to these receptors mediates regulation of pancreatic secretion, gut mobility and energy homeostasis. Rare variations in this gene could increase susceptibility to obesity and elevated serum levels of the encoded peptides may be associated with anorexia nervosa.

Take control of your experiments with tailored peptides. Our [custom peptide synthesis](#) allows you to take full control of your research objectives. Partner with us to access an extensive range of modifications and optimize your peptide properties for ultimate success.

### Overview

Product Name	Anti-Peptide YY/PYY Antibody Picoband™
Reactive Species	Human
Description	Boster Bio Anti-Peptide YY/PYY Antibody Picoband™ catalog # A04223-1. Tested in IHC applications. This antibody reacts with Human.
Application	IHC
Clonality	Polyclonal
Formulation	Each vial contains 4 mg Trehalose, 0.9 mg NaCl and 0.2 mg Na <sub>2</sub> HPO <sub>4</sub> .
Storage Instructions	Store at -20°C for one year from date of receipt. After reconstitution, at 4°C for one month. It can also be aliquotted and stored frozen at -20°C for six months. Avoid repeated freeze-thaw cycles.
Host	Rabbit
Uniprot ID	P10082

### Technical Details

Immunogen	A synthetic peptide corresponding to a sequence in the middle region of human Peptide YY/PYY, which shares 91.7% amino acid (aa) sequence identity with both mouse and rat Peptide YY/PYY.
Recommended Detection Systems	Boster recommends HRP Conjugated anti-Rabbit IgG Super Vision Assay Kit (SV0002-1) for IHC(P).
Cross Reactivity	No cross-reactivity with other proteins.
Isotype	Rabbit IgG

Form	Lyophilized
Concentration	Adding 0.2 ml of distilled water will yield a concentration of 500 ug/ml.
Purification	Immunogen affinity purified.
Suggested Dilutions	<p>Dilute the sample so that the expected range of concentrations fall within the detection range of this kit.</p> <p>If the expected range of concentration is unknown, a pilot test should be conducted to decide the optimal dilution ratio for your samples.</p> <p>Some PubMed article(s) citing the expression level of this target are as follows: Boster Bio's internal QC testing used: Immunohistochemistry (Paraffin-embedded Section), 0.5-1ug/ml</p>

## Anti-Peptide YY/PYY Antibody Picoband™ (A04223-1) Images

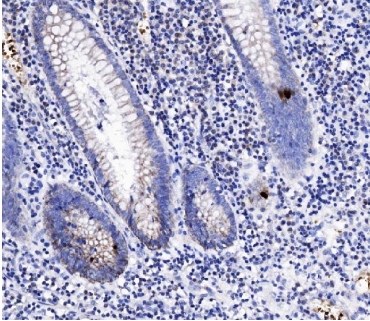


Figure 1. IHC analysis of Peptide YY/PYY using anti-Peptide YY/PYY antibody (A04223-1). Peptide YY/PYY was detected in paraffin-embedded section of human appendicitis tissue tissues. Heat mediated antigen retrieval was performed in citrate buffer (pH6, epitope retrieval solution) for 20 mins. The tissue section was blocked with 10% goat serum. The tissue section was then incubated with 1ug/ml rabbit anti-Peptide YY/PYY Antibody (A04223-1) overnight at 4°C. Biotinylated goat anti-rabbit IgG was used as secondary antibody and incubated for 30 minutes at 37°C. The tissue section was developed using Streptavidin-Biotin-Complex (SABC)(Catalog # SA1022) with DAB as the chromogen.

### Submit a product review to Biocompare.com

Submit a review of this product to Biocompare.com to receive a \$20 Amazon.com giftcard! Your reviews help your fellow scientists make the right decisions. Thank you for your contribution.



Anti-Peptide YY/PYY Antibody™