

Anti-PLC beta3 PLCB3 Antibody

Catalog Number: A04226

About PLCB3

Cysteine string protein (CSP) is a 34 kDa rat brain protein localized to the cytoplasmic surface of the synaptic vesicle. CSP is believed to perform similar functions in the assembly of synaptic vesicle proteins which are essential to membrane trafficking.

Overview

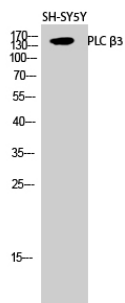
Product Name	Anti-PLC beta3 PLCB3 Antibody
Reactive Species	Human, Mouse, Rat
Description	Boster Bio Anti-PLC beta3 PLCB3 Antibody catalog # A04226. Tested in WB applications. This antibody reacts with Human, Mouse, Rat.
Application	WB
Clonality	Polyclonal 5G7
Formulation	Liquid in PBS containing 50% glycerol, 0.5% BSA and 0.02% sodium azide.
Storage Instructions	Store at -20°C for one year. For short term storage and frequent use, store at 4°C for up to one month. Avoid repeated freeze-thaw cycles.
Host	Rabbit
Uniprot ID	Q01970

Technical Details

Immunogen	This antibody is produced by immunizing rabbits with a synthetic peptide (KLH-coupled) corresponding to a region of N-terminal residues of CD62E.
Predicted Reactive Species	Pig
Isotype	IgG
Form	Liquid
Concentration	1 mg/mL.
Purification	Immunogen affinity purified
Suggested Dilutions	Dilute the sample so that the expected range of concentrations fall within the detection range of this kit. If the expected range of concentration is unknown, a pilot test should be conducted to decide the optimal dilution ratio for your samples. Some PubMed article(s) citing the expression level of this target are as follows:

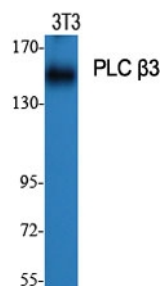
	Boster Bio's internal QC testing used: WB, 1:500-1:2000
--	--

Anti-PLC beta3 PLCB3 Antibody (A04226) Images



Western Blot (WB) analysis of SH-SY5Y cells using PLC beta3 Polyclonal antibody.

(kD)



Western Blot (WB) analysis of specific cells using PLC beta3 Polyclonal antibody.

Submit a product review to Biocompare.com

Submit a review of this product to Biocompare.com to receive a \$20 Amazon.com giftcard! Your reviews help your fellow scientists make the right decisions. Thank you for your contribution.



Anti-PLC beta3 PLCB3 Antibody