

Anti-MAdCAM1 Antibody

Catalog Number: A04227-2

About MADCAM1

MADCAM1 (Mucosal Vascular Addressin Cell Adhesion Molecule 1), also known as MACAM1, is a protein that in humans is encoded by the MADCAM1 gene. By PCR-based analysis of somatic cell hybrids, this gene is mapped to chromosome 19. The protein encoded by this gene is an endothelial cell adhesion molecule that interacts preferentially with the leukocyte beta7 integrin LPAM-1 (alpha4 / beta7), L-selectin, and VLA-4 (alpha4 / beta1) on myeloid cells to direct leukocytes into mucosal and inflamed tissues. It is a member of the immunoglobulin superfamily and is similar to ICAM-1 and VCAM-1.

Overview

Product Name	Anti-MAdCAM1 Antibody
Reactive Species	Human
Description	Boster Bio Anti-MAdCAM1 Antibody catalog # A04227-2. Tested in IHC applications. This antibody reacts with Human.
Application	IHC
Clonality	Polyclonal
Formulation	Each vial contains 4mg Trehalose, 0.9mg NaCl, 0.2mg Na2HPO4, 0.01mg NaN3.
Storage Instructions	Store at -20°C for one year from date of receipt. After reconstitution, at 4°C for one month. It can also be aliquotted and stored frozen at -20°C for six months. Avoid repeated freeze-thaw cycles.
Host	Rabbit
Uniprot ID	Q13477

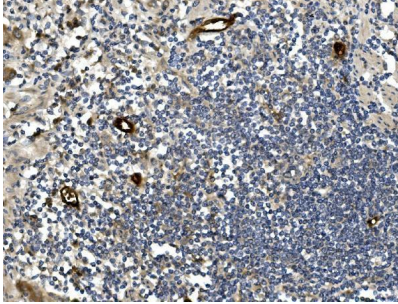
Technical Details

Immunogen	A synthetic peptide corresponding to a sequence in the middle region of human MAdCAM1, which shares 56.5% amino acid (aa) sequence identity with mouse MAdCAM1.
Recommended Detection Systems	Boster recommends HRP Conjugated anti-Rabbit IgG Super Vision Assay Kit (SV0002-1) for IHC(P).
Cross Reactivity	No cross-reactivity with other proteins.
Isotype	Rabbit IgG
Form	Lyophilized
Concentration	Adding 0.2 ml of distilled water will yield a concentration of 500 ug/ml.
Purification	Immunogen affinity purified.

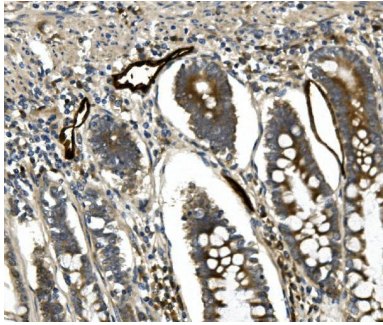
Suggested Dilutions

Immunohistochemistry (Paraffin-embedded Section), 0.5-1ug/ml, Human

Anti-MAdCAM1 Antibody (A04227-2) Images



IHC analysis of MAdCAM14 using anti-MAdCAM1 antibody (A04227-2). MAdCAM1 was detected in paraffin-embedded section of human rectal cancer tissue. Heat mediated antigen retrieval was performed in EDTA buffer (pH8.0, epitope retrieval solution). The tissue section was blocked with 10% goat serum. The tissue section was then incubated with 1ug/ml rabbit anti-MAdCAM1 Antibody (A04227-2) overnight at 4°C. Biotinylated goat anti-rabbit IgG was used as secondary antibody and incubated for 30 minutes at 37°C. The tissue section was developed using Streptavidin-Biotin-Complex (SABC) (Catalog # SA1022) with DAB as the chromogen.



IHC analysis of MAdCAM14 using anti-MAdCAM1 antibody (A04227-2). MAdCAM1 was detected in paraffin-embedded section of human rectal cancer tissue. Heat mediated antigen retrieval was performed in EDTA buffer (pH8.0, epitope retrieval solution). The tissue section was blocked with 10% goat serum. The tissue section was then incubated with 1ug/ml rabbit anti-MAdCAM1 Antibody (A04227-2) overnight at 4°C. Biotinylated goat anti-rabbit IgG was used as secondary antibody and incubated for 30 minutes at 37°C. The tissue section was developed using Streptavidin-Biotin-Complex (SABC) (Catalog # SA1022) with DAB as the chromogen.

Submit a product review to Biocompare.com

Submit a review of this product to Biocompare.com to receive a \$20 Amazon.com giftcard! Your reviews help your fellow scientists make the right decisions. Thank you for your contribution.



Anti-MAdCAM1 Antibody

For Research Use Only. Not for use in diagnostic procedures.