

## Anti-C1q-B Antibody

Catalog Number: A04233-1

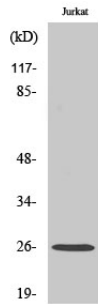
### Overview

Product Name	Anti-C1q-B Antibody
Reactive Species	Human, Mouse, Rat
Description	Boster Bio Anti-C1q-B Antibody catalog # A04233-1. Tested in WB, Flow Cytometry, IHC, IF, ELISA applications. This antibody reacts with Human, Mouse, Rat.
Application	ELISA, Flow Cytometry, IF, IHC, WB
Clonality	Polyclonal
Formulation	Liquid in PBS containing 50% glycerol, 0.5% stabilizing protein and 0.02% sodium azide. *This antibody is supplied in a stabilized formulation. Compatibility with conjugation reactions depends on the chemistry of the conjugation method used. For conjugation methods that are not compatible with the stabilizing components present in this formulation, a carrier-free antibody format is required.
Storage Instructions	Store at -20°C for one year. For short term storage and frequent use, store at 4°C for up to one month. Avoid repeated freeze-thaw cycles.
Host	Rabbit
Uniprot ID	P02746

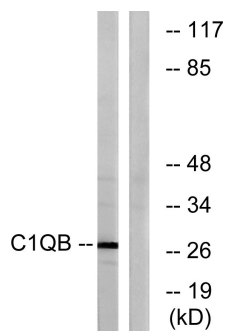
### Technical Details

Immunogen	The antiserum was produced against synthesized peptide derived from human C1QB. AA range:161-210
Isotype	IgG
Form	Liquid
Concentration	1 mg/ml
Purification	The antibody was affinity-purified from rabbit antiserum by affinity-chromatography using epitope-specific immunogen.
Suggested Dilutions	WB 1:500-2000 FC 1:50-200 IHC 1:100-500 IF/ICC1:100-500 ELISA 1:5000-20000

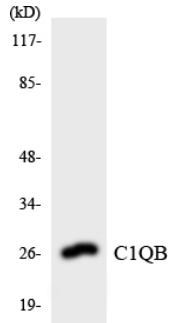
## Anti-C1q-B Antibody (A04233-1) Images



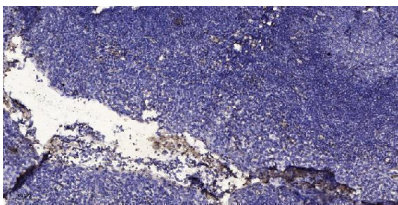
Western Blot analysis of various cells using C1q-B Polyclonal Antibody diluted at 1:1000



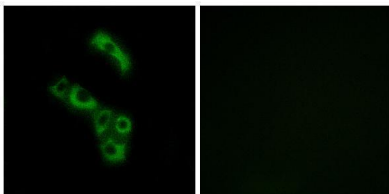
Western blot analysis of lysates from Jurkat cells, using C1QB Antibody. The lane on the right is blocked with the synthesized peptide.



Western blot analysis of the lysates from Jurkat cells using C1QB antibody.



Immunohistochemical analysis of paraffin-embedded human tonsil. 1, Antibody was diluted at 1:200 (4° overnight). 2, Tris-EDTA, pH9.0 was used for antigen retrieval. 3, Secondary antibody was diluted at 1:200 (room temperature, 30min).



Immunofluorescence analysis of A549 cells, using C1QB Antibody. The picture on the right is blocked with the synthesized peptide.

Submit a product review to [Biocompare.com](https://www.biocompare.com)

Submit a review of this product to [Biocompare.com](https://www.biocompare.com) to receive a \$20 Amazon.com giftcard! Your



reviews help your fellow scientists make the right decisions. Thank you for your contribution.

### Anti-C1q-B Antibody

For Research Use Only. Not for use in diagnostic procedures.