

Anti-Coronin 1a/TACO/CORO1A Antibody Picoband®

Catalog Number: A04245-2

About CORO1A

Coronin-1A is a protein that in humans is encoded by the CORO1A gene. This gene encodes a member of the WD repeat protein family. WD repeats are minimally conserved regions of approximately 40 amino acids typically bracketed by gly-his and trp-asn (GH-WD), which may facilitate formation of heterotrimeric or multiprotein complexes. Members of this family are involved in a variety of cellular processes, including cell cycle progression, signal transduction, apoptosis, and gene regulation. Alternative splicing results in multiple transcript variants. A related pseudogene has been defined on chromosome 16.

Overview

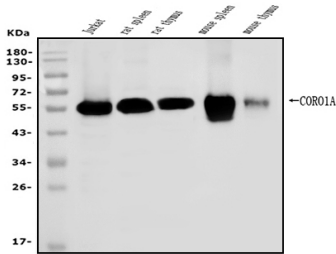
Product Name	Anti-Coronin 1a/TACO/CORO1A Antibody Picoband®
Reactive Species	Human, Mouse, Rat
Description	Boster Bio Anti-Coronin 1a/TACO/CORO1A Antibody Picoband® catalog # A04245-2. Tested in ELISA, Flow Cytometry, IHC, WB applications. This antibody reacts with Human, Mouse, Rat. The brand Picoband indicates this is a premium antibody that guarantees superior quality, high affinity, and strong signals with minimal background in Western blot applications. Only our best-performing antibodies are designated as Picoband, ensuring unmatched performance.
Application	ELISA, Flow Cytometry, IHC, WB
Clonality	Polyclonal
Formulation	Each vial contains 4mg Trehalose, 0.9mg NaCl, 0.2mg Na ₂ HPO ₄ .
Storage Instructions	Store at -20°C for one year from date of receipt. After reconstitution, at 4°C for one month. It can also be aliquotted and stored frozen at -20°C for six months. Avoid repeated freeze-thaw cycles.
Host	Rabbit
Uniprot ID	P31146

Technical Details

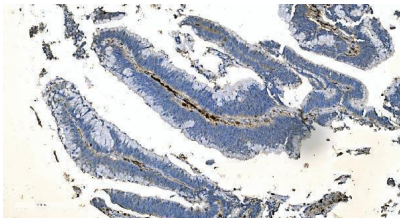
Immunogen	E.coli-derived human Coronin 1a/TACO/CORO1A recombinant protein (Position: E173-K461).
Recommended Detection Systems	Boster recommends Enhanced Chemiluminescent Kit with anti-Rabbit IgG (EK1002) for Western blot, and HRP Conjugated anti-Rabbit IgG Super Vision Assay Kit (SV0002-1) for IHC(P).
Cross Reactivity	No cross-reactivity with other proteins.
Isotype	Rabbit IgG
Form	Lyophilized
Concentration	Adding 0.2 ml of distilled water will yield a concentration of 500 ug/ml.

Purification	Immunogen affinity purified.
Suggested Dilutions	Western blot, 0.25-0.5ug/ml, Human, Mouse, Rat Immunohistochemistry (Paraffin-embedded Section), 1-2ug/ml, Human Flow Cytometry (Fixed), 1-3ug/1x10 ⁶ cells, Human ELISA, 0.1-0.5ug/ml, -

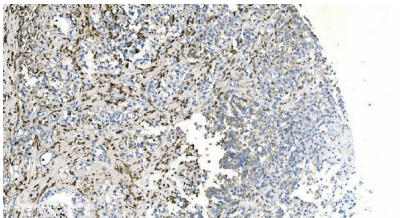
Anti-Coronin 1a/TACO/CORO1A Antibody Picoband® (A04245-2) Images



Western blot analysis of Coronin 1a/TACO/CORO1A using anti-Coronin 1a/TACO/CORO1A antibody (A04245-2). Electrophoresis was performed on a 5-20% SDS-PAGE gel at 70V (Stacking gel) / 90V (Resolving gel) for 2-3 hours. The sample well of each lane was loaded with 30ug of sample under reducing conditions. Lane 1: human Jurkat whole cell lysates, Lane 2: rat spleen tissue lysates, Lane 3: rat thymus tissue lysates, Lane 4: mouse spleen tissue lysates, Lane 5: mouse thymus tissue lysates. After Electrophoresis, proteins were transferred to a Nitrocellulose membrane at 150mA for 50-90 minutes. Blocked the membrane with 5% Non-fat Milk/TBS for 1.5 hour at RT. The membrane was incubated with rabbit anti-Coronin 1a/TACO/CORO1A antigen affinity purified polyclonal antibody (Catalog # A04245-2) at 0.5 ug/mL overnight at 4°C, then washed with TBS-0.1%Tween 3 times with 5 minutes each and probed with a goat anti-rabbit IgG-HRP secondary antibody at a dilution of 1:5000 for 1.5 hour at RT. The signal is developed using an Enhanced Chemiluminescent detection (ECL) kit (Catalog # EK1002) with Tanon 5200 system. A specific band was detected for Coronin 1a/TACO/CORO1A at approximately 57KD. The expected band size for Coronin 1a/TACO/CORO1A is at 57KD.

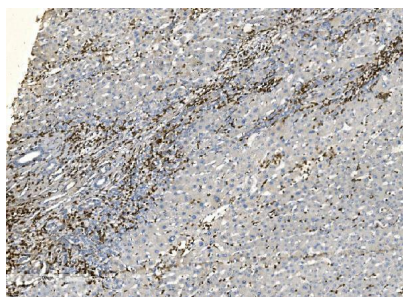


IHC analysis of Coronin 1a/TACO/CORO1A using anti-Coronin 1a/TACO/CORO1A antibody (A04245-2). Coronin 1a/TACO/CORO1A was detected in paraffin-embedded section of human colonic adenocarcinoma tissue. Heat mediated antigen retrieval was performed in EDTA buffer (pH8.0, epitope retrieval solution). The tissue section was blocked with 10% goat serum. The tissue section was then incubated with 2ug/ml rabbit anti-Coronin 1a/TACO/CORO1A Antibody (A04245-2) overnight at 4°C. Biotinylated goat anti-rabbit IgG was used as secondary antibody and incubated for 30 minutes at 37°C. The tissue section was developed using Streptavidin-Biotin-Complex (SABC) (Catalog # SA1022) with DAB as the chromogen.

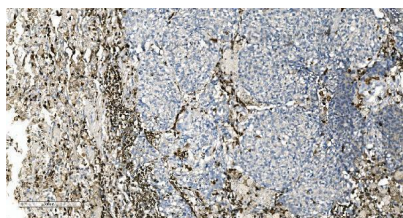


IHC analysis of Coronin 1a/TACO/CORO1A using anti-Coronin 1a/TACO/CORO1A antibody (A04245-2). Coronin 1a/TACO/CORO1A was detected in paraffin-embedded section of human gastric cancer tissue. Heat mediated antigen retrieval was performed in EDTA buffer (pH8.0, epitope retrieval solution). The tissue section was blocked with 10% goat serum. The tissue section was then incubated with 2ug/ml rabbit anti-Coronin 1a/TACO/CORO1A Antibody (A04245-2) overnight at 4°C. Biotinylated goat anti-rabbit IgG was used as secondary antibody and incubated for 30 minutes at 37°C. The tissue section was developed using Streptavidin-Biotin-Complex (SABC) (Catalog # SA1022) with DAB as the chromogen.

IHC analysis of Coronin 1a/TACO/CORO1A using anti-Coronin



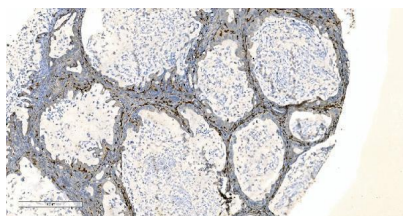
1a/TACO/CORO1A antibody (A04245-2). Coronin 1a/TACO/CORO1A was detected in paraffin-embedded section of human liver cancer tissue. Heat mediated antigen retrieval was performed in EDTA buffer (pH8.0, epitope retrieval solution). The tissue section was blocked with 10% goat serum. The tissue section was then incubated with 2ug/ml rabbit anti-Coronin 1a/TACO/CORO1A Antibody (A04245-2) overnight at 4°C. Biotinylated goat anti-rabbit IgG was used as secondary antibody and incubated for 30 minutes at 37°C. The tissue section was developed using Streptavidin-Biotin-Complex (SABC) (Catalog # SA1022) with DAB as the chromogen.



IHC analysis of Coronin 1a/TACO/CORO1A using anti-Coronin 1a/TACO/CORO1A antibody (A04245-2). Coronin 1a/TACO/CORO1A was detected in paraffin-embedded section of human lung cancer tissue. Heat mediated antigen retrieval was performed in EDTA buffer (pH8.0, epitope retrieval solution). The tissue section was blocked with 10% goat serum. The tissue section was then incubated with 2ug/ml rabbit anti-Coronin 1a/TACO/CORO1A Antibody (A04245-2) overnight at 4°C. Biotinylated goat anti-rabbit IgG was used as secondary antibody and incubated for 30 minutes at 37°C. The tissue section was developed using Streptavidin-Biotin-Complex (SABC) (Catalog # SA1022) with DAB as the chromogen.

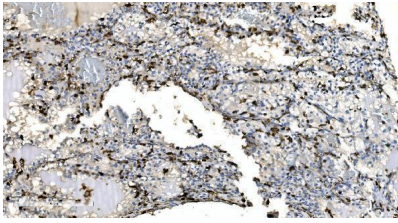


IHC analysis of Coronin 1a/TACO/CORO1A using anti-Coronin 1a/TACO/CORO1A antibody (A04245-2). Coronin 1a/TACO/CORO1A was detected in paraffin-embedded section of human ovarian serous adenocarcinoma tissue. Heat mediated antigen retrieval was performed in EDTA buffer (pH8.0, epitope retrieval solution). The tissue section was blocked with 10% goat serum. The tissue section was then incubated with 2ug/ml rabbit anti-Coronin 1a/TACO/CORO1A Antibody (A04245-2) overnight at 4°C. Biotinylated goat anti-rabbit IgG was used as secondary antibody and incubated for 30 minutes at 37°C. The tissue section was developed using Streptavidin-Biotin-Complex (SABC) (Catalog # SA1022) with DAB as the chromogen.

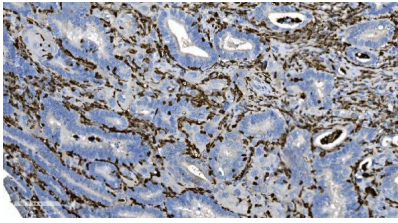


IHC analysis of Coronin 1a/TACO/CORO1A using anti-Coronin 1a/TACO/CORO1A antibody (A04245-2). Coronin 1a/TACO/CORO1A was detected in paraffin-embedded section of human ovarian cancer tissue. Heat mediated antigen retrieval was performed in EDTA buffer (pH8.0, epitope retrieval solution). The tissue section was blocked with 10% goat serum. The tissue section was then incubated with 2ug/ml rabbit anti-Coronin 1a/TACO/CORO1A Antibody (A04245-2) overnight at 4°C. Biotinylated goat anti-rabbit IgG was used as secondary antibody and incubated for 30 minutes at 37°C. The tissue section was developed using Streptavidin-Biotin-Complex (SABC) (Catalog # SA1022) with DAB as the chromogen.

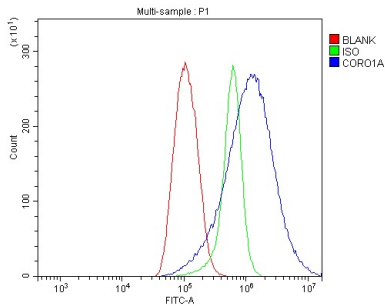
IHC analysis of Coronin 1a/TACO/CORO1A using anti-Coronin



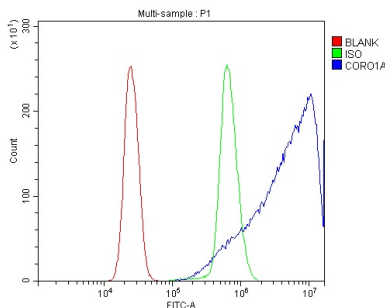
1a/TACO/CORO1A antibody (A04245-2). Coronin 1a/TACO/CORO1A was detected in paraffin-embedded section of human renal clear cell carcinoma tissue. Heat mediated antigen retrieval was performed in EDTA buffer (pH8.0, epitope retrieval solution). The tissue section was blocked with 10% goat serum. The tissue section was then incubated with 2ug/ml rabbit anti-Coronin 1a/TACO/CORO1A Antibody (A04245-2) overnight at 4°C. Biotinylated goat anti-rabbit IgG was used as secondary antibody and incubated for 30 minutes at 37°C. The tissue section was developed using Streptavidin-Biotin-Complex (SABC) (Catalog # SA1022) with DAB as the chromogen.



IHC analysis of Coronin 1a/TACO/CORO1A using anti-Coronin 1a/TACO/CORO1A antibody (A04245-2). Coronin 1a/TACO/CORO1A was detected in paraffin-embedded section of human gallbladder adenocarcinoma tissue. Heat mediated antigen retrieval was performed in EDTA buffer (pH8.0, epitope retrieval solution). The tissue section was blocked with 10% goat serum. The tissue section was then incubated with 2ug/ml rabbit anti-Coronin 1a/TACO/CORO1A Antibody (A04245-2) overnight at 4°C. Biotinylated goat anti-rabbit IgG was used as secondary antibody and incubated for 30 minutes at 37°C. The tissue section was developed using Streptavidin-Biotin-Complex (SABC) (Catalog # SA1022) with DAB as the chromogen.



Flow Cytometry analysis of THP-1 cells using anti-Coronin 1a/TACO/CORO1A antibody (A04245-2). Overlay histogram showing THP-1 cells stained with A04245-2 (Blue line). To facilitate intracellular staining, cells were fixed with 4% paraformaldehyde and permeabilized with permeabilization buffer. The cells were blocked with 10% normal goat serum. And then incubated with rabbit anti-Coronin 1a/TACO/CORO1A Antibody (A04245-2, 1ug/1x10⁶ cells) for 30 min at 20°C. DyLight®488 conjugated goat anti-rabbit IgG (BA1127, 5-10ug/1x10⁶ cells) was used as secondary antibody for 30 minutes at 20°C. Isotype control antibody (Green line) was rabbit IgG (1ug/1x10⁶) used under the same conditions. Unlabelled sample without incubation with primary antibody and secondary antibody (Red line) was used as a blank control.



Flow Cytometry analysis of U937 cells using anti-Coronin 1a/TACO/CORO1A antibody (A04245-2). Overlay histogram showing U937 cells stained with A04245-2 (Blue line). To facilitate intracellular staining, cells were fixed with 4% paraformaldehyde and permeabilized with permeabilization buffer. The cells were blocked with 10% normal goat serum. And then incubated with rabbit anti-Coronin 1a/TACO/CORO1A Antibody (A04245-2, 1ug/1x10⁶ cells) for 30 min at 20°C. DyLight®488 conjugated goat anti-rabbit IgG (BA1127, 5-10ug/1x10⁶ cells) was used as secondary antibody for 30 minutes at 20°C. Isotype control antibody (Green line) was rabbit IgG (1ug/1x10⁶) used under the same conditions. Unlabelled sample without incubation with primary antibody and secondary antibody (Red line) was

used as a blank control.

Submit a product review to Biocompare.com

Submit a review of this product to Biocompare.com to receive a \$20 Amazon.com giftcard! Your reviews help your fellow scientists make the right decisions. Thank you for your contribution.



Anti-Coronin 1a/TACO/CORO1A Antibody

For Research Use Only. Not for use in diagnostic procedures.