

Anti-CRCP Antibody

Catalog Number: A04247-1

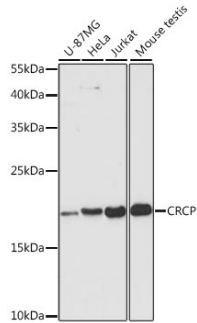
Overview

| | |
|----------------------|--|
| Product Name | Anti-CRCP Antibody |
| Reactive Species | Human, Mouse, Rat |
| Description | Boster Bio Anti-CRCP Antibody catalog # A04247-1. Tested in WB,IHC applications. This antibody reacts with Human,Mouse,Rat. |
| Application | IHC, WB |
| Clonality | Polyclonal |
| Formulation | Rabbit IgG, 1mg/ml in PBS with 0.02% sodium azide, 50% glycerol, pH7.2 |
| Storage Instructions | Store at -20°C for one year. For short term storage and frequent use, store at 4°C for up to one month. Avoid repeated freeze-thaw cycles. |
| Host | Rabbit |
| Uniprot ID | O75575 |

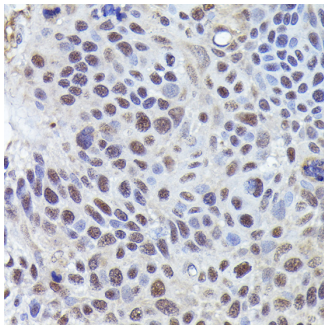
Technical Details

| | |
|---------------------|---|
| Immunogen | Recombinant fusion protein of human CRCP(NP_001035737.1). |
| Isotype | IgG |
| Form | Liquid |
| Concentration | 1 mg/ml |
| Purification | The antibody was affinity-purified from rabbit antiserum by affinity-chromatography using epitope-specific immunogen and the purity is > 95% (by SDS-PAGE). |
| Suggested Dilutions | WB: 1:500-1:2000 IHC: 1:50-1:200 |

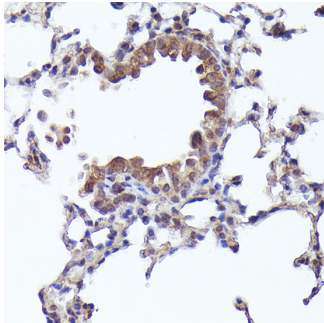
Anti-CRCP Antibody (A04247-1) Images



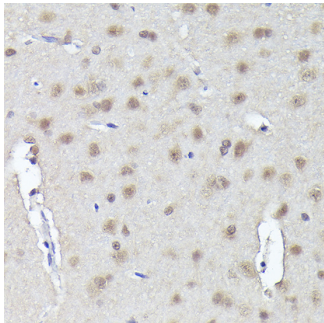
Western blot analysis of extracts of various cell lines, using CRCP antibody at 1:3000 dilution. Secondary antibody: HRP Goat Anti-Rabbit IgG at 1:10000 dilution. Lysates/proteins: 25ug per lane. Blocking buffer: 3% nonfat dry milk in TBST. Detection: ECL Enhanced Kit. Exposure time: 90s.



Immunohistochemistry of paraffin-embedded human esophageal cancer using CRCP Rabbit pAb at dilution of 1:200. Perform high pressure antigen retrieval with 10 mM citrate buffer pH 6.0 before commencing with IHC staining protocol.



Immunohistochemistry of paraffin-embedded mouse lung using CRCP Rabbit pAb at dilution of 1:200. Perform high pressure antigen retrieval with 10 mM citrate buffer pH 6.0 before commencing with IHC staining protocol.



Immunohistochemistry of paraffin-embedded rat brain using CRCP Rabbit pAb at dilution of 1:200. Perform high pressure antigen retrieval with 10 mM citrate buffer pH 6.0 before commencing with IHC staining protocol.

Submit a product review to Biocompare.com

Submit a review of this product to Biocompare.com to receive a \$20 Amazon.com giftcard! Your reviews help your fellow scientists make the right decisions. Thank you for your contribution.



Anti-CRCP Antibody

For Research Use Only. Not for use in diagnostic procedures.