

Anti-NUDT1 Antibody

Catalog Number: A04258-1

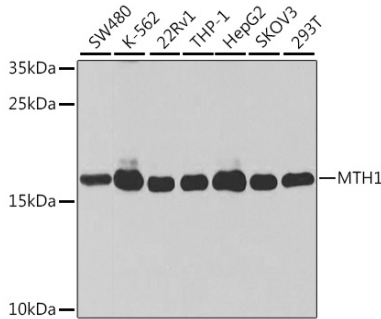
Overview

Product Name	Anti-NUDT1 Antibody
Reactive Species	Human
Description	Boster Bio Anti-NUDT1 Antibody catalog # A04258-1. Tested in WB,IP applications. This antibody reacts with Human.
Application	IP, WB
Clonality	Polyclonal
Formulation	Rabbit IgG, 1mg/ml in PBS with 0.02% sodium azide, 50% glycerol, pH7.2
Storage Instructions	Store at -20°C for one year. For short term storage and frequent use, store at 4°C for up to one month. Avoid repeated freeze-thaw cycles.
Host	Rabbit
Uniprot ID	P36639

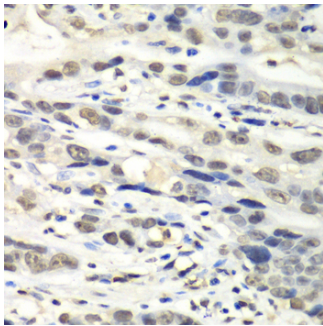
Technical Details

Immunogen	Recombinant fusion protein of human MTH1(NP_945192.1).
Isotype	IgG
Form	Liquid
Concentration	1 mg/ml
Purification	The antibody was affinity-purified from rabbit antiserum by affinity-chromatography using epitope-specific immunogen and the purity is > 95% (by SDS-PAGE).
Suggested Dilutions	WB: 1:500-1:2000 IP: 1:20-1:50

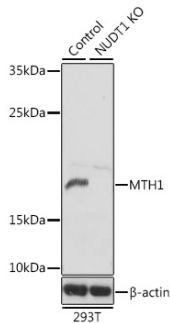
Anti-NUDT1 Antibody (A04258-1) Images



Western blot analysis of extracts of various cell lines, using MTH1 antibody at 1:1000 dilution. Secondary antibody: HRP Goat Anti-Rabbit IgG at 1:10000 dilution. Lysates/proteins: 25ug per lane. Blocking buffer: 3% nonfat dry milk in TBST. Detection: ECL Basic Kit. Exposure time: 10s.



Immunoprecipitation analysis of 200ug extracts of 293T cells using 1ug MTH1 antibody. Western blot was performed from the immunoprecipitate using MTH1 antibody at a dilution of 1:1000.



Western blot analysis of extracts from normal and MTH1 knockout 293T cells, using MTH1 antibody at 1:1000 dilution. Secondary antibody: HRP Goat Anti-Rabbit IgG at 1:10000 dilution. Lysates/proteins: 25ug per lane. Blocking buffer: 3% nonfat dry milk in TBST. Detection: ECL Basic Kit. Exposure time: 10s.

Submit a product review to [Biocompare.com](https://www.biocompare.com)

Submit a review of this product to [Biocompare.com](https://www.biocompare.com) to receive a \$20 Amazon.com giftcard! Your reviews help your fellow scientists make the right decisions. Thank you for your contribution.



Anti-NUDT1 Antibody

For Research Use Only. Not for use in diagnostic procedures.