

Anti-STAU1 Antibody

Catalog Number: A04259

About STAU1

STAU1 is a member of a family of double-stranded RNA (dsRNA)-binding proteins involved in the transport and/or localization of mRNAs to different subcellular compartments and/or organelles. These proteins are characterized by the presence of multiple dsRNA-binding domains which are required to bind RNAs having double-stranded secondary structures. The human STAU1 also contains a microtubule-binding domain similar to that of microtubule-associated protein 1B, and binds tubulin. STAU1 has been shown to be present in the cytoplasm in association with the rough endoplasmic reticulum (RER), implicating this protein in the transport of mRNA via the microtubule network to the RER. STAU1 is also known to interact with influenza ribonucleoproteins NS1, NP, and PA and is required for efficient viral replication.

Overview

Product Name	Anti-STAU1 Antibody
Reactive Species	Human, Mouse, Rat
Description	Boster Bio Anti-STAU1 Antibody (Catalog # A04259). Tested in ELISA, WB, IHC-P, IF applications. This antibody reacts with Human, Mouse, Rat.
Application	ELISA, IF, IHC-P, WB
Clonality	Polyclonal
Formulation	STAU1 Antibody is supplied in PBS containing 0.02% sodium azide.
Storage Instructions	Antibody can be stored at 4°C up to one year. Antibodies should not be exposed to prolonged high temperatures.
Host	Rabbit
Uniprot ID	O95793

Technical Details

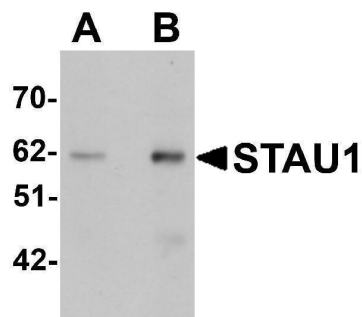
Immunogen	STAU1 antibody was raised against a 15 amino acid synthetic peptide near the carboxy terminus of human STAU1. The immunogen is located within the last 50 amino acids of STAU1.
Predicted Reactive Species	Rat
Isotype	IgG
Form	Liquid
Concentration	1 mg/mL
Purification	STAU1 Antibody is affinity chromatography purified via peptide column.

Suggested Dilutions

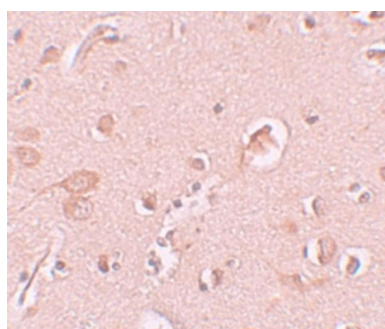
STAU1 antibody can be used for detection of STAU1 by Western blot at 1 - 2 ug/mL. Antibody can also be used for immunohistochemistry starting at 10 ug/mL. For immunofluorescence start at 20 ug/mL.

Antibody validated: Western Blot in rat samples; Immunohistochemistry in human samples and Immunofluorescence in human samples. All other applications and species not yet tested. Optimal dilutions for each application should be determined by the researcher.

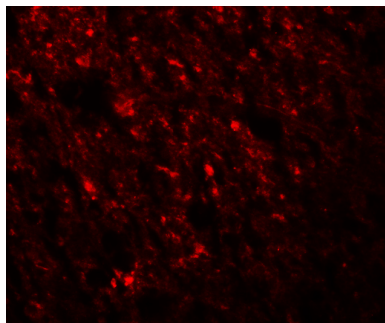
Anti-STAU1 Antibody (A04259) Images



Western blot analysis of STAU1 in rat brain tissue lysate with STAU1 antibody at (A) 1 and (B) 2 ug/mL.



Immunohistochemistry of STAU1 in human brain tissue with STAU1 antibody at 10 ug/mL.



Immunofluorescence of STAU1 in Human Brain cells with STAU1 antibody at 20 ug/mL.

Submit a product review to Biocompare.com

Submit a review of this product to Biocompare.com to receive a \$20 Amazon.com giftcard! Your reviews help your fellow scientists make the right decisions. Thank you for your contribution.



Anti-STAU1 Antibody

For Research Use Only. Not for use in diagnostic procedures.