

Anti-MDH1 Antibody (C-term)

Catalog Number: A04262-1

About MDH1

MDH1 is localized to the cytoplasm and may play pivotal roles in the malate-aspartate shuttle that operates in the metabolic coordination between cytosol and mitochondria.

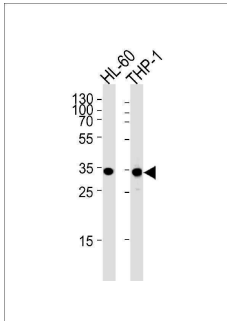
Overview

Product Name	Anti-MDH1 Antibody (C-term)
Reactive Species	Human
Description	Boster Bio Anti-MDH1 Antibody (C-term) (Catalog # A04262-1). Tested in WB, Flow Cytometry, IHC-P application(s). This antibody reacts with Human.
Application	Flow Cytometry, IHC-P, WB
Clonality	Polyclonal
Formulation	Purified polyclonal antibody supplied in PBS with 0.09% (W/V) sodium azide.
Storage Instructions	Maintain refrigerated at 2-8°C for up to 2 weeks. For long-term storage, store at -20°C in small aliquots to prevent freeze-thaw cycles.
Host	Rabbit
Uniprot ID	P40925

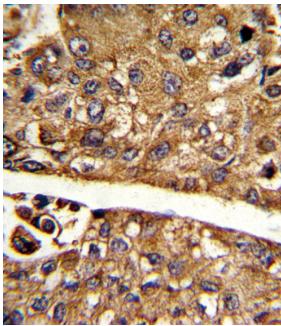
Technical Details

Immunogen	This MDH1 antibody is generated from rabbits immunized with a KLH conjugated synthetic peptide between 286-314 amino acids from the C-terminal region of human MDH1.
Predicted Reactive Species	Bovine, Chicken, Mouse, Pig, Rat
Isotype	Rabbit IgG
Purification	This antibody is prepared by Saturated Ammonium Sulfate (SAS) precipitation followed by dialysis against PBS.
Suggested Dilutions	WB: 1:1000 IHC-P: 1:10-1:50 FC: 1:10-1:50

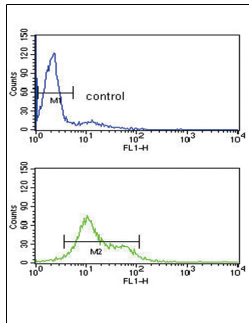
Anti-MDH1 Antibody (C-term) (A04262-1) Images



MDH1 Antibody (C-term) western blot analysis in HL-60, THP-1 cell line lysates (35ug/lane). This demonstrates the MDH1 antibody detected the MDH1 protein (arrow).



Formalin-fixed and paraffin-embedded human hepatocarcinoma reacted with MDH1 Antibody (C-term), which was peroxidase-conjugated to the secondary antibody, followed by DAB staining. This data demonstrates the use of this antibody for immunohistochemistry; clinical relevance has not been evaluated.



MDH1 Antibody (C-term) flow cytometry analysis of HL-60 cells (bottom histogram) compared to a negative control cell (top histogram). FITC-conjugated goat-anti-rabbit secondary antibodies were used for the analysis.

Submit a product review to [Biocompare.com](https://www.biocompare.com)

Submit a review of this product to [Biocompare.com](https://www.biocompare.com) to receive a \$20 Amazon.com giftcard! Your reviews help your fellow scientists make the right decisions. Thank you for your contribution.



Anti-MDH1 Antibody (C-term)

For Research Use Only. Not for use in diagnostic procedures.