

Anti-Homeobox protein Meis2 MEIS2 Antibody

Catalog Number: A04264-1

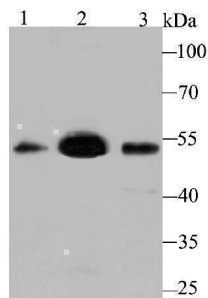
Overview

Product Name	Anti-Homeobox protein Meis2 MEIS2 Antibody
Reactive Species	Human, Mouse
Description	Boster Bio Anti-Homeobox protein Meis2 MEIS2 Antibody catalog # A04264-1. Tested in WB,Flow Cytometry applications. This antibody reacts with Human,Mouse.
Application	Flow Cytometry, WB
Clonality	Polyclonal
Formulation	Rabbit IgG, 1mg/ml in PBS with 0.02% sodium azide, 50% glycerol, pH7.2
Storage Instructions	Store at -20°C for one year. For short term storage and frequent use, store at 4°C for up to one month. Avoid repeated freeze-thaw cycles.
Host	Rabbit
Uniprot ID	O14770

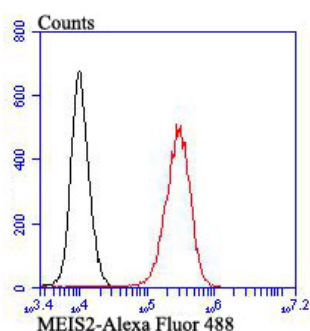
Technical Details

Immunogen	Recombinant protein
Isotype	IgG
Form	Liquid
Concentration	1 mg/ml
Purification	ProA affinity purified
Suggested Dilutions	WB: 1:500-1:1,000 FC: 1:50-1:100

Anti-Homeobox protein Meis2 MEIS2 Antibody (A04264-1) Images



Western blot analysis of MEIS2 on different lysates using anti-MEIS2 antibody at 1/500 dilution. Positive control: Lane 1: Mouse testis Lane 2: SH-SY-5Y Lane 3: Mouse lung



Flow cytometric analysis of K562 cells with MEIS2 antibody at 1/100 dilution (red) compared with an unlabelled control (cells without incubation with primary antibody; black). Alexa Fluor 488-conjugated goat anti-rabbit IgG was used as the secondary antibody.

Submit a product review to [Biocompare.com](https://www.biocompare.com)

Submit a review of this product to [Biocompare.com](https://www.biocompare.com) to receive a \$20 Amazon.com giftcard! Your reviews help your fellow scientists make the right decisions. Thank you for your contribution.



Anti-Homeobox protein Meis2 MEIS2 Antibody

For Research Use Only. Not for use in diagnostic procedures.