

## Anti-ERAP2 Antibody

Catalog Number: A04269

### About ERAP2

The endoplasmic reticulum (ER) aminopeptidase 2 (ERAP2), a member of the peptidase M1 family, like the related protein ERAP1, plays a central role in peptide trimming, a step required for the generation of most HLA class I-binding peptides (1,2). Like ERAP1, ERAP2 is localized to the lumen of the ER and is thought to associate with ERAP1 as a heterodimer (1). Both ERAP1 and ERAP2 have been linked to several human diseases ranging from infections to autoimmunity and cancer, and may play a role in the innate immune response (reviewed in 3).

### Overview

Product Name	Anti-ERAP2 Antibody
Reactive Species	Human
Description	Boster Bio Anti-ERAP2 Antibody (Catalog # A04269). Tested in ELISA, WB applications. This antibody reacts with Human.
Application	ELISA, WB
Clonality	Polyclonal
Formulation	ERAP2 Antibody is supplied in PBS containing 0.02% sodium azide.
Storage Instructions	ERAP2 antibody can be stored at 4°C for three months and -20°C, stable for up to one year.
Host	Rabbit
Uniprot ID	Q6P179

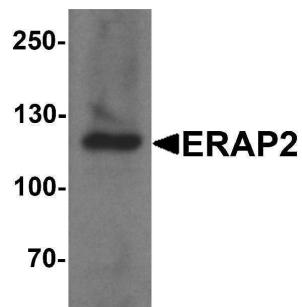
### Technical Details

Immunogen	ERAP2 antibody was raised against a 17 amino acid peptide near the amino terminus of human ERAP2. The immunogen is located within amino acids 110 - 160 of ERAP2.
Predicted Reactive Species	Bovine
Cross Reactivity	ERAP2 antibody is human reactive. Multiple isoforms of ERAP2 are known to exist. ERAP2 antibody is predicted to not cross-react with ERAP1.
Isotype	IgG
Form	Liquid
Concentration	1 mg/mL
Purification	ERAP2 Antibody is affinity chromatography purified via peptide column.
Suggested Dilutions	ERAP2 antibody can be used for detection of ERAP2 by Western blot at 1 - 2 ug/ml.

Antibody validated: Western Blot in human samples. All other applications and species not yet tested. Optimal dilutions for each application should be determined by the researcher.

## Anti-ERAP2 Antibody (A04269) Images

---



Western blot analysis of ERAP2 in human ovary tissue lysate with ERAP2 antibody at 1 ug/ml.

---

### Submit a product review to Biocompare.com

Submit a review of this product to Biocompare.com to receive a \$20 Amazon.com giftcard! Your reviews help your fellow scientists make the right decisions. Thank you for your contribution.



Anti-ERAP2 Antibody

For Research Use Only. Not for use in diagnostic procedures.