

Anti-WTAP Antibody

Catalog Number: A04296-2

About WTAP

The Wilms tumor suppressor gene WT1 appears to play a role in both transcriptional and posttranscriptional regulation of certain cellular genes. This gene encodes a WT1-associating protein, which is a ubiquitously expressed nuclear protein. Like WT1 protein, this protein is localized throughout the nucleoplasm as well as in speckles and partially colocalizes with splicing factors. Alternative splicing of this gene results in several transcript variants encoding three different isoforms. [provided by RefSeq, Jul 2012]

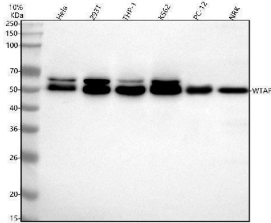
Overview

Product Name	Anti-WTAP Antibody
Reactive Species	Human, Mouse, Rat
Description	Boster Bio Anti-WTAP Antibody catalog # A04296-2. Tested in WB, IP, ELISA applications. This antibody reacts with Human, Mouse, Rat.
Application	ELISA, IP, WB
Clonality	Polyclonal
Formulation	500 ug/ml antibody with PBS, 0.02% NaN ₃ , 1 mg stabilizing protein and 50% glycerol *This antibody is supplied in a stabilized formulation. Compatibility with conjugation reactions depends on the chemistry of the conjugation method used. For conjugation methods that are not compatible with the stabilizing components present in this formulation, a carrier-free antibody format is required.
Storage Instructions	12 months from date of receipt at -20°C as supplied. 6 months at 2 to 8°C after reconstitution. Avoid repeated freezing and thawing.
Host	Rabbit
Uniprot ID	Q15007

Technical Details

Immunogen	E.coli-derived human WTAP recombinant protein (Position: M1-R151).
Form	Liquid
Concentration	500 ug/ml
Purification	Immunogen affinity purified.
Suggested Dilutions	Western blot, 1:500-2000 Immunoprecipitation, 1:50 ELISA, 1:100-1000

Anti-WTAP Antibody (A04296-2) Images



Western blot analysis of WTAP using anti-WTAP antibody (A04296-2). Electrophoresis was performed on a 8% SDS-PAGE gel at 80V (Stacking gel) / 120V (Resolving gel) for 2 hours. The sample well of each lane was loaded with 30 ug of sample under reducing conditions. Lane 1: human HeLa whole cell lysates, Lane 2: human 293T whole cell lysates, Lane 3: human THP-1 whole cell lysates, Lane 4: human K562 whole cell lysates, Lane 5: rat PC-12 whole cell lysates, Lane 6: mouse NRK whole cell lysates. After electrophoresis, proteins were transferred to a nitrocellulose membrane at 150 mA for 50-90 minutes. Blocked the membrane with 5% non-fat milk/TBS for 1.5 hour at RT. The membrane was incubated with rabbit anti-WTAP antigen affinity purified polyclonal antibody (A04296-2) at 1:1000 overnight at 4°C, then washed with TBS-0.1%Tween 3 times with 5 minutes each and probed with a goat anti-rabbit IgG-HRP secondary antibody at a dilution of 1:5000 for 1.5 hour at RT. The signal is developed using an ECL Plus Western Blotting Substrate (Catalog # AR1196-200) with Tanon 5200 system. A specific band was detected for WTAP at approximately 50 kDa. The expected band size for WTAP is at 44 kDa.

Submit a product review to Biocompare.com

Submit a review of this product to Biocompare.com to receive a \$20 Amazon.com giftcard! Your reviews help your fellow scientists make the right decisions. Thank you for your contribution.



Anti-WTAP Antibody

For Research Use Only. Not for use in diagnostic procedures.