

Anti-RPL3/Ribosomal Protein L3 Antibody

Catalog Number: A04311

About RPL3

The L3 protein is a component of the large subunit of cytoplasmic ribosomes.

Leffers H.; Submitted (JUN-1993) to the EMBL/GenBank/DDBJ databases.

Shichijo S., Submitted (MAY-2001) to the EMBL/GenBank/DDBJ databases.

Collins J.E., Genome Biol. 5:RESEARCH84.1-RESEARCH84.11(2004).

Overview

Product Name	Anti-RPL3/Ribosomal Protein L3 Antibody
Reactive Species	Human, Mouse, Rat
Description	Boster Bio Anti-RPL3/Ribosomal Protein L3 Antibody (Catalog # A04311). Tested in WB, IHC applications. This antibody reacts with Human, Mouse, Rat.
Application	IHC, WB
Clonality	Polyclonal
Formulation	Rabbit IgG in phosphate buffered saline (without Mg ²⁺ and Ca ²⁺), pH 7.4, 150mM NaCl, 0.02% sodium azide and 50% glycerol.
Storage Instructions	Store at -20°C for one year. For short term storage and frequent use, store at 4°C for up to one month. Avoid repeated freeze-thaw cycles.
Host	Rabbit
Uniprot ID	P39023

Technical Details

Immunogen	Synthesized peptide derived from internal of human RPL3.
Predicted Reactive Species	Boar, Bovine, Canine, Golden Hamster
Isotype	IgG
Form	Liquid
Concentration	1 mg/ml
Purification	The antibody was affinity-purified from rabbit antiserum by affinity-chromatography using epitope-specific immunogen.
Suggested Dilutions	Dilute the sample so that the expected range of concentrations fall within the detection range of this

kit.

If the expected range of concentration is unknown, a pilot test should be conducted to decide the optimal dilution ratio for your samples.

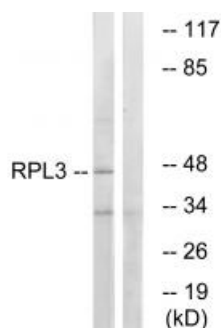
Some PubMed article(s) citing the expression level of this target are as follows:

Boster Bio's internal QC testing used:

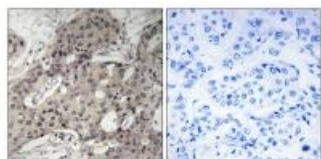
Western blotting: 1:500~1:3000

Immunohistochemistry: 1:50~1:100

Anti-RPL3/Ribosomal Protein L3 Antibody (A04311) Images



Western blot analysis of extracts from HT-29 cells, using RPL3 antibody A04311.



Immunohistochemistry analysis of paraffin-embedded human breast carcinoma tissue using RPL3 antibody A04311.

Submit a product review to Biocompare.com

Submit a review of this product to Biocompare.com to receive a \$20 Amazon.com giftcard! Your reviews help your fellow scientists make the right decisions. Thank you for your contribution.



Anti-RPL3/Ribosomal Protein L3 Antibody