

Anti-TLE4 (H190) Antibody

Catalog Number: A04314

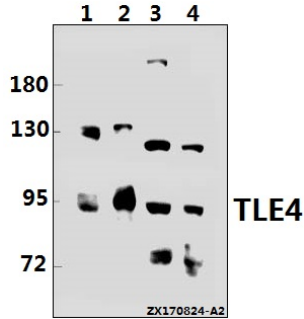
Overview

Product Name	Anti-TLE4 (H190) Antibody
Reactive Species	Human, Mouse, Rat
Description	Boster Bio Anti-TLE4 (H190) Antibody catalog # A04314. Tested in WB,IHC,IP applications. This antibody reacts with Human,Mouse,Rat.
Application	IP, IHC, WB
Clonality	Polyclonal
Formulation	Rabbit IgG, 1mg/ml in PBS with 0.02% sodium azide, 50% glycerol, pH7.2
Storage Instructions	Store at -20°C for one year. For short term storage and frequent use, store at 4°C for up to one month. Avoid repeated freeze-thaw cycles.
Host	Rabbit
Uniprot ID	Q04727

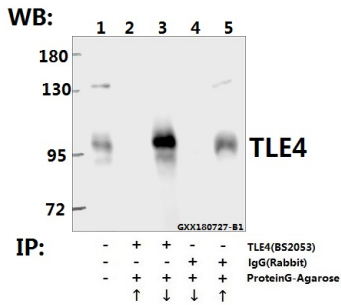
Technical Details

Immunogen	Synthetic peptide, corresponding to amino acids 170-230 of Human TLE4.
Isotype	IgG
Form	Liquid
Concentration	1 mg/ml
Purification	The antibody was affinity-purified from rabbit antiserum by affinity-chromatography using epitope-specific immunogen and the purity is > 95% (by SDS-PAGE).
Suggested Dilutions	WB: 1:500-1:1000 IHC: 1:50-1:200 IP: 1:10-1:100

Anti-TLE4 (H190) Antibody (A04314) Images



Western blot (WB) analysis of TLE4 (H190) pAb at 1:500 dilution Lane1:U-87MG whole cell lysate(40ug) Lane2:HEK293T whole cell lysate(10ug) Lane3:The Testis tissue lysate of Mouse(40ug) Lane4:The Testis tissue lysate of Rat(40ug)



Immunoprecipitation of HEK293T cell lysate using TLE4 (H190) pAb (Sepharose Bead Conjugate) #BD0048(lane 2 and lane 3) and Nonspecific IgG Control (Sepharose Bead Conjugate) #BD0048 (lane 4 and lane 5) .Lane 1 is 30% input. The western blot was probed using TLE4 (H190).“↑”supernatant; “↓”(deposition)

Submit a product review to Biocompare.com

Submit a review of this product to Biocompare.com to receive a \$20 Amazon.com giftcard! Your reviews help your fellow scientists make the right decisions. Thank you for your contribution.



Anti-TLE4 (H190) Antibody

For Research Use Only. Not for use in diagnostic procedures.