

Anti-Homeobox protein EMX2 EMX2 Antibody

Catalog Number: A04322-1

About EMX2

EMX2, like its closely related homolog EMX1, is a homeobox transcription factor involved in specifying cell fates in the developing central nervous system and participates in the development of olfactory neurons. EMX2 is expressed in the dorsal telencephalon during development in a low rostral-lateral to high caudal-medial gradient and is proposed to pattern the neocortex into defined functional areas. It is also expressed in embryonic and adult olfactory neuroepithelia where it complexes with eukaryotic translation initiation factor 4E (eIF4E) and possibly regulates mRNA transport or translation. In the developing urogenital system, it is expressed in epithelial tissues and is negatively regulated by HOXA10.

Overview

Product Name	Anti-Homeobox protein EMX2 EMX2 Antibody
Reactive Species	Human
Description	Boster Bio Anti-Homeobox protein EMX2 EMX2 Antibody (Catalog # A04322-1). Tested in ELISA, WB, IHC-P, IF applications. This antibody reacts with Human.
Application	ELISA, IF, IHC-P, WB
Clonality	Polyclonal
Formulation	EMX2 Antibody is supplied in PBS containing 0.02% sodium azide.
Storage Instructions	EMX2 antibody can be stored at 4°C for three months and -20°C, stable for up to one year. Avoid repeated freeze-thaw cycles. Antibodies should not be exposed to prolonged high temperatures.
Host	Rabbit
Uniprot ID	Q04743

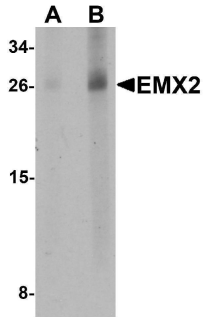
Technical Details

Immunogen	EMX2 antibody was raised against an 18 amino acid synthetic peptide near the center of human EMX2. The immunogen is located within amino acids 60 - 110 of EMX2.
Predicted Reactive Species	Bovine, Mouse
Cross Reactivity	At least two isoforms of EMX2 are known to exist; this antibody will detect both isoforms. EMX2 antibody is predicted to not cross-react with EMX1
Isotype	IgG
Form	Liquid
Concentration	1 mg/mL
Purification	EMX2 Antibody is affinity chromatography purified via peptide column.

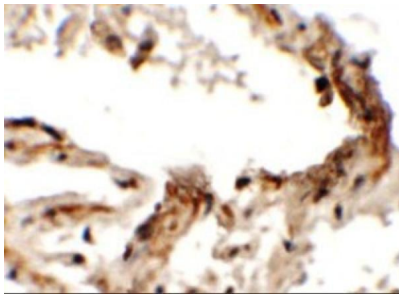
Suggested Dilutions

EMX2 antibody can be used for detection of EMX2 by Western blot at 1 - 2 ug/mL. Antibody can also be used for immunohistochemistry starting at 2.5 ug/mL. For immunofluorescence start at 20 ug/mL. Antibody validated: Western Blot in human samples; Immunohistochemistry in human samples and Immunofluorescence in human samples. All other applications and species not yet tested. Optimal dilutions for each application should be determined by the researcher.

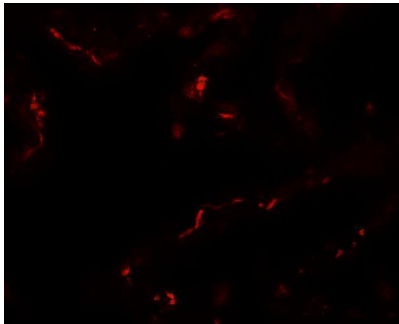
Anti-Homeobox protein EMX2 EMX2 Antibody (A04322-1) Images



Western blot analysis of EMX2 in human lung tissue lysate with EMX2 antibody at (A) 1 and (B) 2 ug/mL.



Immunohistochemistry of EMX2 in human lung tissue with EMX2 antibody at 2.5 ug/mL.



Immunofluorescence of EMX2 in human lung tissue with EMX2 antibody at 20 ug/mL.

Submit a product review to Biocompare.com

Submit a review of this product to Biocompare.com to receive a \$20 Amazon.com giftcard! Your reviews help your fellow scientists make the right decisions. Thank you for your contribution.



Anti-Homeobox protein EMX2 EMX2 Antibody

For Research Use Only. Not for use in diagnostic procedures.